

June 2024



West Central Electric Cooperative

A Touchstone Energy® Cooperative



# Electric News

## WCE names Youth Tour and CYCLE delegates

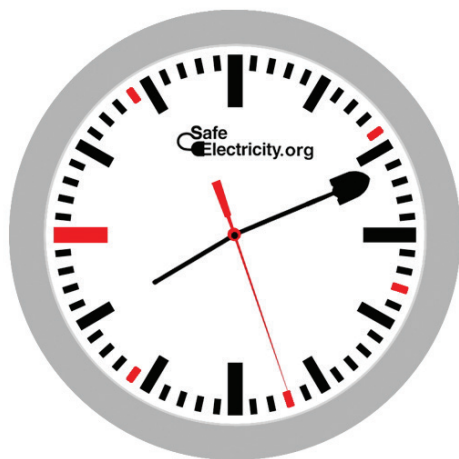
PAGE 3

Capital credits for  
2023 are allocated  
PAGE 2

English and WCE  
scholarship winners  
are announced  
PAGES 6-7



an underground line is **damaged**  
every **nine minutes**



call 811 **before** you dig

*Information collected from JULIE*

## West Central Electric Cooperative, Inc.

### Headquarters:

7867 S. Highway 13, P.O. Box 452, Higginsville, MO 64037  
816-565-4942 or 1-800-491-3803 • PAY BY PHONE: 1-855-874-5349

### To report outages 24/7:

Call 816-565-4942 or 1-800-491-3803 • or report outages at  
[www.westcentralelectric.coop](http://www.westcentralelectric.coop) under "Report Outage"

### District office:

506 N. Broadway, Oak Grove, MO 64075

### Website:

[www.westcentralelectric.coop](http://www.westcentralelectric.coop)

### General Manager:

Michael Newland

### Board of Directors:

Densil Allen Jr., *President*; Clark Bredehoeft, *Vice-President*; Dale Jarman, *Treasurer*; Robert Simmons, *Secretary*; Stan Rhodes, *Asst. Secretary*; Richard Strobel, *Director*; Jeremy Ahmann, *Director*; Colby Dowell, *Director*; Elizabeth Houtsma, *Director*

*This institution is an equal opportunity provider and employer.*

ON THE COVER: First-place winner of WCE's Rural Electric Youth Tour to Washington, D.C. Saul Logan speaks during the April finals competition.

## West Central allocates capital credits for 2023

West Central Electric Cooperative's margins have been allocated to each member/owner who purchased electric energy in 2023, according to General Manager Michael Newland.

Because rural electric cooperatives' business structure differs from investor-owned utility companies, the money WCE makes as margins (profits) is returned to the member/owners who use the service, rather than to unknown investors. The money is used as equity in the cooperative, and is returned to the members over time as determined by your board of directors.

West Central Electric tries to balance the system by staying financially strong while also returning the profits to its members over time. Each year, the board of directors decides how this will be accomplished.

You can calculate your own allocation for the year by using the formula in the box below.

The percentage used in the formula was determined by the total margins (profits) of the cooperative, and the total cost paid for our wholesale power in 2023. This year, your allocated amount for 2023 will appear on the bill you received in May.

If you have a non-rural/residential account, any questions regarding how to calculate your allocation, or if you do not know your year-to-date patronage, contact the office at 816-565-4942 or 1-800-491-3803.

### Total paid for electricity in 2023

(Beginning with the bill reflecting usage for January 2023 and ending with the bill reflecting usage for December 2023.)

0.12535497818444

### 2023 allocation

(Applies to rural/residential rate only.)

### Example:

\$1,000 total billing for 2023

\$1,000

X

0.12535497818444

\$125.35

2023 allocation

# 2024 RURAL ELECTRIC *Youth Tour* & *CYCLE*

## WCE delegates are set for this year's Youth Tour and CYCLE trips

HIGGINSVILLE, Mo. – After a close competition, featuring top-notch speeches from students around the area, three area high school students are preparing to pack their bags for a week in Washington, D.C.

Saul Logan and Jonathan Henry of Warrensburg High School, and Kayley Marten of Crest Ridge High School were named winners of the annual Rural Electric Youth Tour competition sponsored by West Central Electric Cooperative, Inc. They will receive an all-expense-paid trip to the nation's capital June 14-20 for the National Rural Electric Youth Tour.

Finalists in the 2024 competition participated in the second round April 3 at West Central Electric Cooperative's headquarters in Higginsville. The students delivered their essays during the oral competition, with the top three winners receiving the trips to the National Rural Electric Youth Tour. The seven finalists were the top students from among 29 entries.

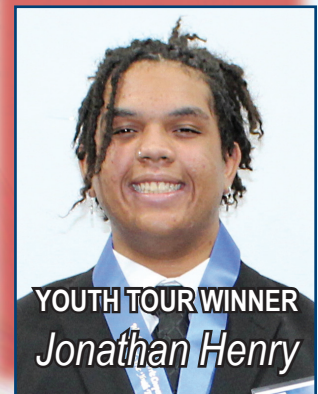
Following a Youth Tour reception June 14, Missouri's 100-plus-member delegation will travel to Washington, D.C. on June 15. While there, delegates will visit, among other places, the Washington Monument, and the Jefferson, Lincoln, Roosevelt, Vietnam Wall and Korean War memorials. They will get the opportunity to witness the Changing of the Guard Ceremony at the Tomb of the Unknown Soldiers in Arlington National Cemetery, and take an evening dance cruise on the Potomac River. Also on the agenda is Youth Day, which is attended by delegates from across the country, and a day on Capitol Hill where students can meet with their representatives in Congress.

Four students were named winners of the Cooperative Youth Conference and Leadership Experience (CYCLE) in Jefferson City July 16-19. Students chosen to represent WCE at CYCLE were Warrensburg High School students Elora Coleman, Emi Cox, Kennedy Crookes and Adam Wisocky.

CYCLE, which is coordinated by the Association of Missouri Electric Cooperatives, has been recognized as a top cooperative youth conference in the nation. During the conference, students will spend a day at the Missouri State Capitol, learn about cooperatives, participate in leadership and team-building activities, and hear top-notch speakers, as well as spend a day in St. Louis. For more information on the Rural Electric Youth Tour or the Cooperative Youth Conference and Leadership Experience, please contact West Central Electric Cooperative at 800-491-3803.



**YOUTH TOUR WINNER**  
*Saul Logan*



**YOUTH TOUR WINNER**  
*Jonathan Henry*



**YOUTH TOUR WINNER**  
*Kayley Marten*



2024 CYCLE delegates are congratulated by WCE Board President Densil Allen Jr. and General Manager Michael Newland. (L-r): Allen, Elora Coleman, Kennedy Crookes, Emi Cox, Adam Wisocky and Newland.

# Home workshop safety

Without taking proper precautions, the enjoyment of a do-it-yourself project can quickly turn into disaster. You may have all the latest power tools, hand tools, hardware and materials, but if you do not put safety first, you may end up with a trip to the hospital instead of a new set of shelves, upgraded lighting in the kitchen or a trendy shiplap accent wall in the bedroom. Here are some fundamental workshop and electrical safety tips to help keep things running smoothly.

## 1. Wear safety gear, glasses and gloves

The first rule of workshop safety is to dress appropriately. Avoid loose clothing that can get caught in power tools. Never wear dangling jewelry or scarves. Roll up your sleeves or choose ones that are tight against your skin. Closed-toe shoes are a must, and steel-toed boots are recommended.

Safety glasses are necessary 100% of the time. Gloves are fine for handling materials. Before you reach for a belt sander or scroll saw, however, take the gloves off to minimize the risk of them getting caught and so you get tactile feedback in case anything goes wrong.

## 2. Observe electrical safety

Before you start any DIY project, inspect all your power tools and their cords for loose plugs, exposed wires or worn insulation. Fires are one of the top dangers when working with electric gear, especially if you have combustible materials around, such as sawdust.

If you must use an extension cord, choose one long, heavy-duty (appropriately rated) cord and keep it untangled and out of the way to prevent tripping and yanking your tools off the workbench. When you are done working, unplug everything from the extension cord and put it away.

## 3. Keep your workshop clean

Anything left on the floor is a tripping hazard, and you do not want to imagine what could happen if you trip while using a power tool. Anything cluttering up your worktable introduces obstacles that can get caught in a saw or drill mechanism or block your ability to move your project safely as you work on it. The byproducts of do-it-yourself work, such as sawdust, cast-off nails and screws, and rags or brushes with potentially combustible or hazardous fluids on them, increase the risk of fires and projectiles.

## 4. Keep tools in good condition

Besides inspecting the cords and plugs for electrical safety, everything works better in the workshop if you have clean, sharp and well-lubricated tools. A dull saw blade brings a much higher chance of injury than a sharp one. It is less likely to cut smoothly through the wood or other material and more likely to kick back and cut you. Dull saws, routers or drill bits also run the risk of breaking during use. Use appropriate lubrication, such as WD-40 or others specifically created for power tools.

## 5. Know your limits

If you have a lot of experience as a do-it-yourselfer, there are projects you can tackle from memory. However, approach anything new as if you are a beginner for maximum workshop safety. Read instructions. Look up reputable guide videos to refresh your skills or learn something new. Most importantly, recognize when you are in over your head and leave those non-DIY projects to the professionals.

*For more information about electrical safety, visit [SafeElectricity.org](http://SafeElectricity.org).*

# New WCE RoundUp Foundation board members named



**Appointed:** March 2024

**Hometown:** Holden, Mo.

**Term expires:** March 2027



**Patty Raker**

**Appointed:** March 2024

**Hometown:** Concordia, Mo.

**Term expires:** March 2027



**Melissa Luebbert**

**\*Current RoundUp Foundation members:** President Amy Hoover, Holden; Vice-President Kyle Grumke, Wellington; Secretary Vivian Bumgarner, Oak Grove; Treasurer Dennis Knipmeyer, Higginsville; Kim Hall, Warrensburg; Donna Matthews, Warrensburg; Devin Graf, Blackburn

**\*RoundUp board meets quarterly** to consider grant applications for funding of local projects.

**\*The RoundUp program lets WCE members support their local communities by rounding up their bill to the nearest dollar with the extra going to RoundUp. The average annual donation for most members is around \$6 per year.**



RoundUp Board members Amy Hoover, foundation president; Patty Raker and Kim Hall present Holden Elementary representatives and students with a grant check. (Back l-r) Hoover, Vice Principal Paige Farmer, Principal Sarah Burks, Raker, Hall and Motor Lab Interventionist Licia Hogan. (Front l-r) Holden Elementary students Kolby Webster, Nolan Phillips and Anna Graff-Rowe.



## Holden School District \$1,600

Funds will be used for equipment for the school's motor lab which is used to reset students' brains for learning.

## Camp Agape \$2,500

Funds will be used for the Wellington Community Christian Center's summer camp to provide safe transportation for field trips.



RoundUp Foundation President Amy Hoover (left) presents Camp Agape director Cailey Pingel with a grant check.



RoundUp Foundation board members Devin Graf, Amy Hoover, Kim Hall, Melissa Luebbert and Kyle Grumke present Concordia Elementary staff and Special Olympics athletes and coaches with a grant check.

## Concordia R-2 Special Olympics Bowling \$1,500

Funds will be used for lane fees, rentals, refreshments and shirts for participants.

## Assembly of God Good 360 Program \$1,600

Funds will be used to fund necessities not covered by food stamps (laundry soap, shampoo, tooth brushes, etc.) for those in need.



RoundUp Foundation members present Good 360 Program representatives with a grant check. (L-r) RoundUp Foundation President Amy Hoover, Pastor Dan Mahurin, 360 Assistant Mary Miller, 360 Director Gina Duggan, RoundUp Foundation members Patty Raker, Melissa Luebbert and Kim Hall.

# June is recalculation month for co-op level pay plan accounts

Members who are on the cooperative's Level Payment Plan will see their bills recalculated with the billing period ending in June, according to West Central Electric Accounting Manager Rebecca Hoeflicker.

"The new amounts will be reflected on all billings that are due June 22 or after," she said.

## **Level Payment Plan Requirements:**

West Central Electric Cooperative members who have had service in their name for at least 12 months and meet the requirements below are eligible.

"This billing plan is great for budgeting, as it eliminates high and low amounts due and results in the same amount due each month," Hoeflicker said.

To receive full benefit of participation in the Level Payment program, you must make your monthly payment by the normal due date, maintain a good payment record with no returned checks on your account, and have no more than one trip for collection. Failure to do so may result in removal from the program and could result in a requirement to pay any balance due in full.

## **How it works:**

- The 12-month average is calculated by using the previous 12 months' bills.
  - If the member is new to the Level Payment Plan, this 12-month average is the amount the member will pay for the next 12 months.
  - If the member was previously on the Level Payment Plan, we compare and "true up" your previous 12 months' actual bills with what was paid. Your 12-month average is determined, and any credit or debit carryover is divided by 12 and added or subtracted to the 12-month average to determine your next year's monthly amount.
  - Each month a bill is mailed (or can be viewed online, if paperless) showing actual usage compared to the level payment amount you pay.
- To sign up for Level Payment Plan, or if you have any questions, please contact the office at 800-491-3803.

## BRIGHT IDEAS



Did you know that a ceiling fan could allow you to raise the thermostat setting without affecting your comfort? Fans work by creating a wind-chill effect on your skin so you feel cooler. Raising the temperature and using a fan can help you use less energy running your air conditioner; you may even be able to avoid using your air conditioner altogether.

## 2024 John & Kathryn English Scholars



**Lynn Dyer**

*4-year, \$1,000 Renewable Winner  
(potential \$4,000 award)*



**Zoe Engelbrecht**

*One-year Winner  
\$1,500*



**Annika Riekhof**

*One-year Winner  
\$1,500*



**Madalyn Frerking**

*One-year Winner  
\$1,500*

**\*The John & Kathryn English Memorial Scholarship Trust** was created under the terms of the Last Will & Testament of Kathryn English. The purpose of this trust is to provide scholarship grants for high school graduates who are active 4-H members at the time of their high school graduation and who desire to attend college to pursue a degree. John English, a former director of West Central Electric Cooperative, Inc., designated West Central's Board of Directors as Trustees of the Memorial Scholarship Trust.

## 2024 West Central Electric Cooperative Scholars

### \$1,000 scholarship winners



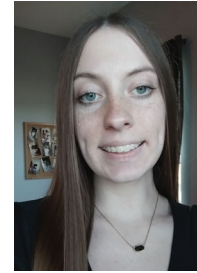
Serena Sartin



Carson Zimmerschied



Delaney Brant



Makenze Hodson



Elyssa Lundquist



Blake Sullivan



Ethan Corder



Cara Williams



Avry Dunn



Alexa Villegas



Madeline Sims



Corinna Utterback



Annika Riekhof



Kinley Lilleman



Madysen Trobough



Grace Shanks



Faith Moore



Kameron Dankenbring



Sarah Gillespie



Samantha Souza



Heather Stegner



Jessica Roberts

\*The **West Central Electric Cooperative Scholarship** is available to students whose parents or legal guardians are current members of the cooperative. The funds are awarded to students graduating high school and planning to attend a college, university or trade or technical school the fall following their graduation.

# FROM THE WCE BOARDROOM

Regular meeting of the Board of Directors held March 28, 2024

A meeting of the board of directors of West Central Electric Cooperative, Inc. was held at the offices of the cooperative located in Higginsville, Missouri, at 10 a.m. March 28, 2024, pursuant to the bylaws of the cooperative and previous resolution of the board of directors. The meeting was called to order by President Densil Allen Jr. Cooperative Attorney Sheri Smiley caused the minutes of the meeting to be kept. The following directors were present: Allen, Clark Bredehoeft, Dale Jarman, Richard Strobel, Stan Rhodes, Jeremy Ahmann, Colby Dowell and Elizabeth Houtsma. Also present was General Manager Michael Newland. Director Robert Simmons arrived at 11:50 a.m. Dowell excused himself from the meeting at 11:30 a.m.

## APPROVAL OF AGENDA

After discussion, the agenda was approved.

## APPROVAL OF CONSENT AGENDA

The board approved its consent agenda consisting of the minutes of the regular meeting of Feb. 22, 2024; expenditures for the month of February 2024; new membership applications and membership terminations.

## APPROVAL/ACCEPTANCE OF REPORTS

The following February reports were approved/accepted:

**Financing and Treasurer's Report:** Accounting Manager Rebecca Hoefflicker presented the February 2024 Operating Report (RUS Form 7) and Comparative Operating Statement. She reviewed the Financial and Statistical Report and Treasurer's Report with monthly and annual budget comparisons. She also gave the investment report. She presented and reviewed statistical data pertaining to operating revenue, expenses, margins, assets, liabilities, cash flow management, and KWH sales and ratios. She gave an update on NW Margins.

## CAPITAL CREDIT RETIREMENT

Newland and Hoefflicker presented the Capital Credit Report Retirement recommendation. Staff's recommendation was to retire 55% of the 2005 Capital Credits for a total of \$998,949.19. After discussion the motion passed.

**Operations Report:** Operations Manager Scott Gard provided an oral report to supplement his written Operations Report. He reported on crews and that there were no major outages for the month. He gave an update on the education crews had received during the month. He gave a machine and fleet report and reported on brush crews and right-of-way work being done.

**Safety and Engineering Report:** Engineering Manager Pete Nelson provided an oral report to supplement his written Safety and Engineering Report. As of Feb. 29, 2024, employees have worked 484 days without a lost-time accident. Co-op employees drove a total of 37,444 miles as of the end of February without a serious accident. He discussed NW substation sites and potential new load and housing developments. An engineering/staking report was given.

**Member Services Report:** Member Services Manager Brent Schlotzhauer provided an oral report to supplement his written Member Services Report. His report included RoundUp enrollment and RoundUp updates. Net metering contracts were reported on. Interviews for scholarships occurred. Rebates were reported on. Continued issues with the US Postal Service and payments being mailed and received late were discussed. Online training was reported on and an annual meeting update was given. An update was also given on facilities.

**IT Report:** IT Manager Tim Bowler gave an IT report. He discussed Tech



Advantage. He also reported on an IT conference he attended.

## NW REPORT

Newland reported on the March NW meeting. He reported on upcoming projects, grants, AECL, and outages.

## SCHOLARSHIP COMMITTEE

Jarman gave a report on the scholarship awards given.

## BYLAWS AND POLICY COMMITTEE REPORT

Jarman gave a report on suggested changes the Bylaw Committee is considering.

## NOMINATING COMMITTEE

The following were appointed to the 2024 Nominating Committee: Adam Heater, Paul Nolte, Jeremy Sanders, Will Grauberger, Charles Bartrum, Lance Thieman, Laura Smith and Stephanie Othick.

## NRECA ANNUAL MEETING REPORT

The directors who attended the NRECA Annual Meeting gave a report.

## BOARD SELF ASSESSMENT

The directors reviewed the self assessment results that they had completed. A policy on conflict of interest will be brought back for consideration.

## LEGAL REPORT

Smiley gave the legal report for the month.

## MANAGER'S REPORT

Newland presented the monthly Manager's Report. He reported on meetings in Lone Jack he attended. He discussed how the rate increase is being communicated and updated the board on an incorrect bill that had been sent to a member.

## UNFINISHED BUSINESS

None.

## NEW BUSINESS

None.

## EXECUTIVE SESSION

Executive session was called at 11:35 a.m. and adjourned at 12:15 p.m. Following the executive session, a motion was passed to approve the execution of a contract for services and two land leases for Evolution Technology, LLC.

## ADJOURNMENT

Meeting adjourned.

## FINANCIAL REPORT • Statement of Operations • February 2024

	This month	YTD 2024	YTD 2023
<b>Revenue</b>	<b>\$3,253,284</b>	<b>\$6,943,420</b>	<b>\$6,612,766</b>
Power Bill Expense	1,753,950	3,728,317	3,318,380
Operation & Maintenance Expense	616,275	1,213,579	1,117,752
Depreciation Expense	207,736	414,776	441,532
Interest Expense	117,937	255,770	237,149
<b>Total cost of Service (Total Expense)</b>	<b>2,695,898</b>	<b>5,612,442</b>	<b>5,114,813</b>
Operating Margins (Revenue less Expenses)	557,386	1,330,978	1,497,953
Other Margins	21,476	41,097	38,173
<b>TOTAL MARGINS</b>	<b>\$578,862</b>	<b>\$1,372,075</b>	<b>\$1,536,126</b>

