



A Touchstone Energy® Cooperative

West Central Electric Cooperative

June 2015

ElectricNews

West Central Electric Cooperative, Inc. ~ Serving our members' needs since 1939

June is recalculation month for level pay accounts

New amounts reflected on billing due in July

Members who are on the cooperative's Budget Billing Plan will see their bills recalculated with the billing period ending in June, according to West Central Electric Office Manager Sandy Starke.

"Those new amounts will be reflected on the billing that is due in July," she

said. "Those on Billing Cycle 2 will see their new amount in June."

Sign up for Budget Billing...

For West Central Electric Cooperative members who have service in their name and have lived there for one year or more, budget billing can help avoid the peak bills that come with winter heating or summer air conditioning. Here's how Budget Billing works:

- The total of electric usage over the last twelve months is calculated.

- That amount is divided by twelve months to find the average monthly bill with cushion for weather changes.

- The amount due for that amount of kilowatts is rounded and if a security light is at the location, the cost for use of the light is added. This is the monthly budget amount to be billed.

- Each month a bill is mailed showing

actual usage compared to the estimate you pay.

- Your account is reviewed each year and if the energy consumption appears to differ significantly from the budgeted amount, the billing department may contact you to see if you would like to make an adjustment to your account.

- In June of each year, we true up and compare your actual consumption with

Continued on page 4

Wilkinson, DeHaven win cooperative's EDS scholarship

Program also provides paid summer internship for both recipients

West Central Electric Cooperative is proud to announce two area residents as recipients of the West Central Electric/State Technical College Electrical Distributions Systems Scholarship.

Santa Fe High School senior Wyatt Wilkinson and Higginsville resident Jonathan DeHaven participated in interviews with cooperative officials in April before each being awarded a two-year college scholarship worth \$4,800. Upon graduation, Wilkinson and DeHaven will earn an associate of applied science degree in electrical distribution systems from State Technical College in Linn, Mo.

The scholarship provides for students a quality college training program, a two-year college degree, and on-the-job training, including a required, paid internship at West Central Electric Cooperative to be completed during the summer period between the first and

second year of the two-year program.

Wyatt Wilkinson

Wilkinson, a May graduate of Santa Fe High School, said he looks forward



Wilkinson

to a career as a lineman in a rural community.

"I appreciate rural community values and it would mean a lot to me to be able

to work and serve the community I have grown up in or another rural community," he said.

He has participated in various sports and activities at Santa Fe High School, including baseball, rodeo, chorus, and speech and drama. He was an honor roll student all four years.

Jonathan DeHaven

DeHaven, who graduated from Lafayette County C-I High School in 2013, said studying conservation at the University of Central Missouri made him realize he wanted more than just a job working outside.

"Majoring in conservation, I realized I enjoy working with my hands more and thought this career path would be a better fit," he said. "I have older mentors and fellow co-workers that have chosen this career path, and look up to them highly. I've realized through them that this is not only a job, but a way to give back to the community that I have grown up in."

DeHaven has been involved in many community activities in his hometown of Higginsville, and is an avid bowler

and golfer.

Both students will work part-time at the cooperative this summer in maintenance



DeHaven

and also spend time getting familiar with the co-op and the work crews before attending classes in the fall. They will join WCE next summer as official interns before completing their final year in the EDS program.

Attention WCE Members...

This year, your special Annual Meeting issue of *West Central Electric News* will be

published in the August issue of Rural Missouri.

This publication is your official notice of the meeting. It will contain information on the annual meeting scheduled for **Friday, August 21, 2015**, as well as board candidate profiles and other pertinent meeting information.

Your official registration card will arrive along with the bill you receive at the end of July or the beginning of August (depending on your billing cycle).

This card must be brought to the annual meeting in order to register for prizes and vote in the board of directors election.

Headquarters:

7867 S. Highway 13, P.O. Box 452
Higginsville, MO 64037
816-565-4942 or 1-800-491-3803

District office:

506 N. Broadway
Oak Grove, MO 64075

PAY BY PHONE: 1-855-874-5349

Website:

www.westcentralelectric.coop

24-Hour Number:

1-800-491-3803

General Manager:

Mike Gray

*This institution is an equal
opportunity provider and employer.*

Board of Directors:

Densil Allen, Jr. President
Clark Bredehoeft, Vice-Pres.
Dale Jarman, Treasurer
Robert Simmons, Secretary
Stan Rhodes, Asst. Sect.
Max Swisegood, Director
Richard Strobel, Director
Sandra Streit, Director
Jeremy Ahmann, Director

Cooperative will return \$1.3 million to members

West Central Electric Cooperative will return \$1.4 million to its members in capital credits refunds in July, according to WCE Office Manager Sandy Starke.

A credit will be issued on the billing due in August for all active members. A check will be mailed to non-members the first part of July.

If you purchased electricity from the cooperative during the years **listed in the box to the right**, you should receive a check or credit. Checks will not be issued for amounts under \$5.00.

"If a member is on our level payment program, the credit will not affect their monthly amount due," Starke said. "The credit will be applied to the balance on the account.

"If a member has multiple accounts, the credits will be applied based on the previous month's bill; largest balance first, then the next until fully applied. If there are no current balances on the account, the credit will be applied to the primary account, the account that West Central has determined as holding the main membership," she said.

If a member has multiple accounts, and would like the credit applied to a different account than the one determined by the cooperative, members may call the office and request a transfer to the account of their choice.

If you do not see a credit on your account, and feel you should have, you may contact Sandy Starke at 1-800-491-3803.

\$1.4 million in Capital Credits will be refunded in 2015

This year, capital credits will appear as a credit to your electric account, and will be noted as such on your August billing.

Capital Credits being distributed this year include:

- ◆ 100% of all allocations for the year 1995
- ◆ 50% of all allocations for the year 1996

If you were were a member of the cooperative during these years, you should receive a refund.

Questions about this year's capital credits distribution should be directed to Sandy Starke in the Higginsville office: 800-491-3803.

Clean and affordable electricity--co-ops in the lead

Climate change is back in the news. For years, Congress haggled over details of climate change legislation meant to curb carbon dioxide emissions from sources like cars, factories and power plants. The latest approach is for the Environmental Protection Agency to pass regulations limiting releases of carbon dioxide.

The inner-workings of this effort are complicated, but one thing comes through loud and clear: Trimming carbon dioxide emissions will be challenging and expensive.

Developing climate change policy will alter the way we think about electricity, plain and simple. Electric co-ops are working to make sure these new policies are fair to everyone, while minimizing the impact on your electric bill. And we're already making investments in energy efficiency and renewable, "clean and green" generation as a part of these efforts.

Electric cooperatives are no strangers to renewable energy. Across the nation, co-ops are developing innovative ways to generate electricity from renewable sources, and developing technology to reduce carbon dioxide emissions from traditional fossil fuels like coal and natural gas.

One of the leaders in wind energy is Springfield, Mo.-based Associated Electric Cooperative, which provides wholesale power to 40 electric cooperatives in Missouri. Members of electric co-ops served by Associated Electric Cooperative are the beneficiaries of wind power generated by five wind farms in Missouri and Kansas. A sixth project located in Oklahoma is expected

to add considerably to the mix when it becomes fully operational.

In North Dakota, Basin Electric Power Cooperative, a wholesale power supplier to co-ops in nine states, plans to separate

And renewable sources of power, which account for 11 percent of all co-op electricity, are as unique and varied as the co-ops using them. In the Southeast, biomass generation — using

Rock and Bull Shoals dams.

Of course, the cheapest and cleanest power remains the power that's never generated. As a result, energy efficiency education remains at the forefront of your electric cooperative's efforts to help members control costs.

Associated Electric Cooperative's "Take Control & Save" program has saved enough electricity to power 86,000 member homes for a year over the life of the energy-saving appliances it has helped members purchase. Associated has helped members lower their electric bills by distributing 2.6 million compact fluorescent light bulbs, and providing rebate incentives for the purchase of 28,023 Energy Star-rated appliances, 15,886 high-efficiency water heaters and 10,528 heat pumps. It's also funded 8,478 residential energy audits and given out 4,251 rebates to help members make weatherization improvements to their homes.

The vast majority of all electric co-ops, a full 92 percent, sponsor energy efficiency education programs, and 77 percent offer residential energy audits to their members.

Electric co-ops are hard at work keeping electricity reliable, safe and affordable—and we can produce it cleaner, too. But we need to make sure electric bills stay affordable.

Through the Cooperative Action Network grassroots campaign, you can join in a dialog on how your electric cooperative balances protecting the environment and keeping electricity affordable. Please join the conversation today by visiting www.action.coop.



Wind turbines, like these pictured, are a part of industry-leader Associated Electric cooperative's renewable energy generation.

carbon dioxide gas from smokestack emissions at a coal-fired power plant, pump it into underground cavities, and in theory keep it there forever.

Wabash Valley Power Association, a wholesale power supplier for 28 electric co-ops in five states, including Perryville, Mo.-based Citizens Electric, converts coal into a clean-burning synthetic gas stripped of polluting sulfur compounds and mercury, which it then burns to generate electricity. Carbon dioxide emissions from the process are 20 percent lower than those produced by a traditional coal-fired power plant. Wabash Valley Electric also has 40 megawatts of wind power in its portfolio.

everything from peanut shells to chicken waste to make electricity — shows great potential. The Northwest remains awash in hydro and wave power; the Midwest boasts lots of wind; and the Southwest sees so few cloudy days that solar power becomes an easy sell.

Since 2009, electric cooperatives have doubled their renewable energy capacity, from 2.9 gigawatts in 2009 to 5.3 gigawatts in 2014. This capacity includes electricity generated from wind, solar, small hydro, biomass, landfill gas and geothermal installations. In addition, electric cooperatives purchased nearly 10 gigawatts of renewable hydropower from federal facilities such as Table

Holden High School



Chancelor House
Carla and Kenny House
Science or Music/Theater

Grain Valley High School



Kaitlyn McCain
Darrell and Dana McCain
Secondary Education

Lafayette Coutny C-I High School



Kelsey Stuenkel
Steve and Tani Stuenkel
Occupational Therapy

Odessa High School



Colby Dowell
Randall and Cinda Dowell
Agri-Business & Spanish

Odessa High School



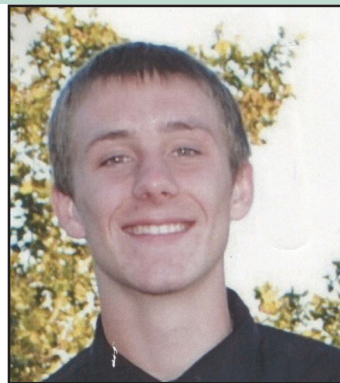
Megan Berry
Timothy and Rita Berry
Elementary Education

Odessa High School



Seth Smith
Shane and Pam Smith
Engineering

Odessa High School



Colby Nickels
Brett and Jeanette Nickels
Sports Medicine

Odessa High School



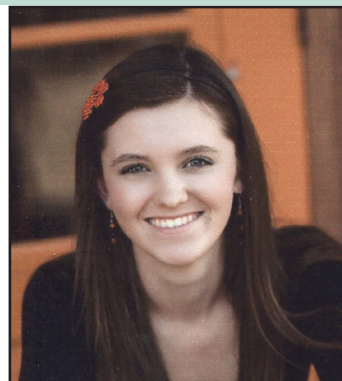
Amanda Findora
Donald and Karen Findora
Art/History Ed. & Coaching

Knob Noster High School



Ryan Seng
Mark and Lara Seng
Integrative Physiology

Oak Grove High School



Anna Lee
Robert and Susan Lee
Biology

Oak Grove High School



Amber Shaw
Charles and Dana Shaw
Pediatric Nursing/Business

Warrensburg High School



Alexander Bistline
Russell and Jana Bistline
Mech./Aerospace Eng.

Warrensburg High School



Ali Landrum
Joseph and Tracy Landrum
Pharmaceuticals

Warrensburg High School



Christopher O'Connor
John and Sheri O'Connor
Business

**photos not provided*

Odessa High School

Kane Wolkey
Brian Wolkey & Carrey Goodman
Physical Chemistry

&

Nicole Conn
James and Shelley Conn
Communications

William Chrisman High School

Jacob Keefe
Larry and Susan Keefe
Electrical/Mechanical Eng.

Chilhowee High School

Elizabeth Harness
Patrick and Jeanine Harness
Child & Family Dev./Psychology

Oak Grove High School

Callie Tripp
Chad and Tara Tripp
Nursing

Crest Ridge High School

Emma Downing
Ross and Michele Downing
Ag Econ./International Ag Bus.

Warrensburg High School

Kirsten Dale
Todd and Stay Dale
Nursing & Spanish

Grain Valley High School

Parker McBride
Steve and Teresa McBride
Civil Engineering

Fort Osage High School

Ashley Hahne
Richard and Michelle Hahne
Art Education

Congratulations

to the winners of the

**2015 West Central Electric
Cooperative Scholarship**

From the Boardroom...

Regular meeting of the Board of Directors held March 27, 2014

The meeting was called to order by Vice President Clark Bredehoeft. Robert Simmons, Secretary of the Cooperative, caused the minutes of the meeting to be kept. The following Directors were present: Max Swisegood, Clark Bredehoeft, Dale Jarman, Robert Simmons, Sandra Streit, Jeremy Ahmann and Stan Rhodes. Directors absent were Richard Strobel and Densil Allen, Jr. Also present were General Manager Mike Gray, and general counsel Shawn Battagler.

APPROVAL OF AGENDA

After discussion, the agenda was approved.

APPROVAL OF MINUTES

The unapproved minutes of the regular meeting of the board of directors held March 3, 2015 were approved.

REVIEW OF EXPENDITURES FOR FEBRUARY

An itemized list of expenditures for February was presented to the board, and the payment of the bills was ratified.

APPROVAL OF REPORTS

The following February 2015 reports were approved: Operating Report (RUS Form 7) and Comparative Operating Statement including the Financial Statistical Report with month and budget comparisons and statistical data pertaining to operating revenue, expenses, margins, assets, liabilities, and KWH sales; Treasurer's Report and the written monthly Construction, Retirement, Maintenance and Operations Report.

SAFETY REPORT

Gray reported no lost time accidents during the month.

MEMBERSHIPS

The applications submitted for membership in the cooperative were accepted and approved. Directors reviewed a list of requests for termination of membership in the cooperative which, along with their requests that their billings be deducted from their deposits and the remainder, if any, be refunded to them, were accepted and approved.

N.W. ANNUAL MEETING DELEGATE AND ALTERNATE

Board members designated Robert Simmons as the delegate and Max Swisegood was designated alternate.

N.W. ELECTRIC POWER COOPERATIVE, INC. REPORT

Gray and Swisegood reported on their attendance at the N.W. meeting. Highlights included all requirements contracts, a letter-writing campaign from the Sierra Club, litigation affecting other Missouri cooperatives and the N.W. annual meeting.

RESOLUTION AUTHORIZING PREPAYMENT OF RUS NOTES

The board adopted a resolution authorizing the cooperative to prepay the discounted amount on any outstanding notes to RUS for any note eligible for prepayment.

RESOLUTION TO BORROW FROM NRUCFC

The board adopted a resolution authorising the cooperatibe to borrow from the National Rural Utilities Cooperative Finance Corporation as needed.

STRATEGIC PLANNING OVERSIGHT COMMITTEE

Gray presented a plan fo organizing a committee to oversee the strategic planning process. Committee members appointed were Sandra Streit, Dale Jarman and Stan Rhodes.

BYLAWS DISCUSSION

Jarman led a discussion regarding proposed bylaw revisions.

SCHOLARSHIP COMMITTEE REPORT

Jarman and Simmons presented information on the Scholarship Committee meeting and scholarships awarded.

MANAGER'S REPORT

Gray provided his Manager's Report for the month which included moving the date of the 2015 Annual Meeting to Aug. 21; election service; Nominating Committee and a new CEO named at Central Electric.

UNFINISHED BUSINESS

None.

NEW BUSINESS

None

MEETING ADJOURNED

FINANCIAL REPORT • <i>Statement of Operations</i> • February 2015			
	This month	YTD 2015	YTD 2014
Revenue	2,723,297	5,584,770	5,980,984
Power Bill Expense	1,639,488	3,121,417	3,234,302
Opertion & Maint. Expense	356,544	559,682	390,231
Depreciation Expense	157,002	312,549	301,236
Interest Expense	101,959	211,032	214,086
Total cost of Srvc. (Total Expense)	2,254,993	4,204,680	4,139,855
Operating Margins (Revenue less Expenses)	209,361	856,579	1,323,851
Other Margins	39,306	44,316	34,570
TOTAL MARGINS	248,667	900,895	1,358,421

June is recalculation month for level payment accounts

New amounts reflected on billing due in July

Members who are on the cooperative's Budget Billing Plan will see their bills recalculated with the billing period ending in June, according to West Central Electric Office Manager Sandy Starke.

"Those new amounts will be reflected on the billing that is due in July," she said. "Those on Billing Cycle 2 will see their new amount in June."

Sign up for Budget Billing...

For West Central Electric

Cooperative members who have service in their name and have lived there for one year or more, budget billing can help avoid the peak bills that come with winter heating or summer air conditioning. Here's how Budget Billing works:

- The total of electric usage over the last twelve months is calculated.
- That amount is divided by twelve months to find the average monthly bill with cushion for weather changes.
- The amount due for that amount of kilowatts is rounded and if a security light is at the location, the cost for use of the light is added. This is the monthly budget amount to be billed.
- Each month a bill is mailed showing actual usage compared to the estimate you pay.

Banish energy phantoms

How many energy phantoms are hiding in your house? Many come from home electronics, but phantoms can lurk in the kitchen, bathroom, living room and office. Here's where the U.S. Department of Energy suggests you look for them:

Bathroom — Hair dryers, curling irons and electric shavers left plugged in when not in use are burning energy. Tug the plug.

Kitchen — Before you leave for the day, unplug the electric kettle, coffee-maker, espresso machine, toaster oven, kitchen television, maybe even the microwave.

Living room — Older set-top cable boxes and DVRs may drain 25 to 45 watts of energy even when turned off but plugged in. Hook them up to a power switch or an outlet with a wall switch. Of course, if you're taping a show, you'll need to leave the device turned on.

Note that in 2017, the efficiency of set-top boxes is due to improve. Call your provider about these new boxes.

Home office — Computers, fax machines, printers and scanners all use energy. Put them to sleep or turn off completely when not in use and have them all plugged into a power strip for more efficient control.

Bedroom — Space heaters, televisions, phone chargers, DVD and CD players, humidifiers all find their way into bedrooms. The simple way to save energy: unplug when not in use.

- For appliances that store settings or are inconvenient to switch off frequently, leave them plugged directly into the wall or a separate power strip; group as many other appliances and electronics as possible on power strips and switch on only when needed
- Remove unneeded nightlights
- Buy a laptop for your next computer upgrade — they use much less energy than desktop computers

• Rechargeable batteries for products like cordless phones are more cost effective than throwaway batteries

• Screen savers do not reduce energy use by monitors; automatic switching to sleep mode or manually turning monitors off is the better energy-saving strategy

• To maximize savings with a laptop, put the AC adapter on a power strip that can be turned off; more advanced power strips allow you to plug your computer into a master outlet and speakers, printers, external hard drives, scanners and monitors into other outlets on the strip, all controlled by the master

• Turn off your computer when not in use for 20 minutes or more and both the computer and monitor if away for two hours or more

• Unplug battery chargers when the batteries are fully charged or the chargers are not in use

• Buy Energy Star equipment, whose standby power use may be lower than 1 watt

Also consider using a power meter to find out how much electricity an appliance or device uses. Plug the meter between the appliance and wall socket to measure its electricity use. Home meters — such as the Kill-a-Watt — are available for as low as \$25. Visit www.amazon.com for reviews and ordering.

Calculate your Phantom Load...

Take Control & Save at www.take-controlandsave.coop/phantomload-calc.aspx provides a handy tool for calculating just how much phantom load you have in your home. A phantom load is any device that consumes electricity when turned off but is still plugged into an outlet.

You may be surprised at how many devices you have sapping energy — and how easy it is to unplug them.