



A Touchstone Energy® Cooperative

West Central Electric Cooperative

June 2017

ElectricNews

West Central Electric Cooperative, Inc. ~ Serving our members' needs since 1939

Cooperative will return \$1.4 million to members

West Central Electric Cooperative will return \$1.4 million to its members in capital credits refunds in July, according to WCE Office Manager Sandy Starke.

A credit will be issued on the billing due in August for all active members. A check will be mailed to non-members the first part of July.

If you purchased electricity from the cooperative during the years **listed in the box to the right**, you should receive a check or credit. Checks will not be issued for amounts under \$5.00.

"If a member is on our level payment program, the credit will not affect their monthly amount due," Starke said. "The credit will be applied to the balance on the account."

"If a member has multiple accounts, the credits will be applied based on the previous month's bill; largest balance first, then the next until fully applied. If there are no current balances on the account, the credit will be applied to the primary account, the account that West Central has determined as holding the main membership," she said.

If a member has multiple accounts, and would like the credit applied to a different account than the one determined by the cooperative, members may call the office and request a transfer to the account of their choice.

If you do not see a credit on your account, and feel you should have, you may contact Sandy Starke at 1-800-491-3803.

\$1.4 million in Capital Credits will be refunded in 2017

This year, capital credits will appear as a credit to your electric account, and will be noted as such on your August billing.

Capital Credits being distributed this year include:

- ◆ 100% of all allocations for the year 1997
- ◆ 10% of all allocations for the year 1998

If you were were a member of the cooperative during these years, you should receive a refund.

Questions about this year's capital credits distribution should be directed to Sandy Starke in the Higginsville office: 800-491-3803 or 816-565-4942.

SPECIAL RECOGNITION...WCE lineman Brandon Steffen and his fellow crew members who traveled to Bolivia as part of the NRECA Energy Trails program, were recognized at the Missouri State Capitol for their role in helping to bring electricity to two villages in Bolivia last summer. (L-r) Brandon Steffen, West Central Electric Cooperative; Steve Joannes, Central Power; Roger Berhorst, Three Rivers Electric Cooperative; District 12 Senator Dan Hegeman, Craig Moeller, MO Electric Co-ops; Steve Smith, Northeast Power; and Tom Golder, Osage Valley Electric Cooperative. Unable to attend were Rob Hawkins, Boone Electric Cooperative; Jared Kelley, SEMO Electric Cooperative and John Winther, Laclede Electric



Attention WCE Members...

Your special Annual Meeting issue of *West Central Electric News* will be

published in the July issue of Rural Missouri.

This publication is your official notice of the meeting. It will contain information on the annual meeting scheduled for **Friday, Aug. 4, 2017**, as well as board candidate profiles, bylaw changes and other pertinent meeting information.

Your official registration card will arrive along with the bill you receive at the end of June or the beginning of July (depending on your billing cycle).

This card must be brought to the annual meeting in order to register for prizes and vote in the board of directors election.

Headquarters:

7867 S. Highway 13, P.O. Box 452
Higginsville, MO 64037
816-565-4942 or 1-800-491-3803

District office:

506 N. Broadway
Oak Grove, MO 64075

PAY BY PHONE: 1-855-874-5349

Website:

www.westcentralelectric.coop

24-Hour Number:
1-800-491-3803

General Manager:
Mike Gray

*This institution is an equal
opportunity provider and employer.*

Board of Directors:

Densil Allen, Jr. President
Clark Bredehoeft, Vice-Pres.
Dale Jarman, Treasurer
Robert Simmons, Secretary
Stan Rhodes, Asst. Sect.
Max Swisegood, Director
Richard Strobel, Director
Sandra Streit, Director
Jeremy Ahmann, Director

Annual meeting mail-in voting information coming soon

Members wanting to participate in their cooperative's annual meeting but unable to attend may cast their vote for directors on the ballot by mail-in voting.

Beginning with the May 31 billing cycle, a notice will be included in mem-

bers' bills explaining the vote-by-mail process. Members will be required to submit a request for a voting packet either by calling the office or mailing in the form with their bill. The notice will have a perforated bottom that can

be completed and either mailed to the cooperative or delivered in person.

Members who are able to attend the meeting may still vote in person at the meeting and do not have to submit a

mail-in ballot.

Questions on the mail-in voting procedures may be directed to Office Manager Sandy Starke at 800-491-3803 or 816-565-4942.

June is recalculation month for level pay accounts

New amounts reflected on billing due in July

Members who are on the cooperative's Budget Billing Plan will see their bills recalculated with the billing period ending in June, according to West Central Electric Office Manager Sandy Starke.

"Those new amounts will be reflected on the billing that is due in July," she said. "Those on Billing Cycle 2 will see their new amount in June."

Sign up for Budget Billing...

For West Central Electric Cooperative members who have service in their name and have lived there for one year or

more, budget billing can help avoid the peak bills that come with winter heating or summer air conditioning. Here's how Budget Billing works:

- The total of electric usage over the last 12 months is calculated.

- That amount is divided by 12 months to find the average monthly bill with cushion for weather changes.

- The amount due for that amount of kilowatts is rounded, plus a daily service availability charge, and \$9.20 if a security light is at the location. This is the monthly budget amount to be billed.

- Each month a bill is mailed showing actual usage compared to the estimate you pay.

- Your account is reviewed each year and if the energy consumption appears to differ significantly from the budgeted amount, the billing department may contact you to see if you would like to make an adjustment to your account.

- In June of each year, we true up and compare your actual consumption with what was paid. Your new 12-month average is determined and any credit or debit carry over is divided by the 12 and added or subtracted for that 12 month average to determine your next year's monthly amount.

To receive full benefit of participation in the Budget Billing program, you must make your monthly payment by

the normal due date, maintain a good payment record with no returned checks on your account and no more than one trip for collection. Failure to do so may result in removal from the program and could result in a requirement to pay any balance due in full with the next regular monthly billing. For those members who are already on Budget Billing, your new amount will be re-calculated with the billing period ending in June and be reflected on the billing that is due in July. Those members on billing Cycle 2 will see their new amount in June.

To sign up for Budget Billing, or if you have any questions, please contact the billing department at 800-491-3803.

A dozen tips for summer-proofing your home

Take steps now to cool down your house

Install radiant barrier – Energy consultant Michael Bluejay suggests adding a layer of aluminum-foil type material or special paint to the rafters under the roof. This will reflect heat from the sun back out through the roof. Note that a radiant barrier should not completely block air flow, so leave cutouts at the end of the barrier. Also, while a barrier is good in the summer, it will reduce the amount of heat gain in the attic in winter. A barrier can reduce energy use by 3 to 8 percent.

Ventilate the attic – Check to see if you have enough soffit vents and attic vents. If not, add more. These vents will release some of the hot air that can accumulate in the attic — as much as 150 degrees for dark-shingled houses. The vents can knock the temperature below 110 degrees and also prevent moisture buildup. Keep the vents clear of insula-

tion.

Add window fans – Window fans are another means of ventilating your house. The U.S. Department of Energy says to install them in windows facing away from the prevailing wind and exhausting hot air from your home. To cool as much of your home as possible, tightly close windows near the fan and open windows in rooms far from the fan, preferably on the windward side of your home. Windows near cooler, shaded outdoor areas provide the best intake air.

Add a ceiling fan – If you use air conditioning, a ceiling fan will allow you to raise the thermostat setting about 4 degrees and still be comfortable.

Upgrade your door – Install a storm door that allows you to use its screen feature on cool evenings and turn off the air conditioning. If you can't afford an upgrade, make sure doors and windows close and seal tightly.

Shade your windows – Sunny windows make air conditioners work extra hard. In fact, direct sunlight can

raise heat in a house 10 to 20 degrees. To keep out the sun, install drapes, blinds, exterior shades and other window coverings. Applying solar control window films to existing glass is another effective method to reduce solar light and heat.

Seal your ducts – Those out-of-sight ducts can leak like sieves and account for 25 percent of your cooling costs. Follow do-it-yourself tips at <http://s.coop/duct>. Or you can hire a professional. First seal ducts that run through the attic, crawlspace, unheated basement or garage. Use duct sealant (mastic) or metal-backed (foil) tape to seal the seams and connections of ducts. After sealing the ducts in those spaces, wrap them in insulation to keep them from getting hot in the summer or cold in the winter. Next, look to seal any other ducts that you can access in the heated or cooled part of the house. Note that if you're installing a new central air conditioner, your ducts have to be inspected anyway.



Seal out the hot air – Weatherstrip, caulk and insulate to keep the hot air out. The same winter insulation rules apply to summer insulation. Look for "weatherization" at www.doe.gov for tips on sealing and insulating your home. Here are the most important areas to insulate:

- Ceilings and finished attic walls
- Wall to unheated garage

Continued on page 4

Odessa High School



Abby Bertz
Greg and Kim Bertz
Agricultural Econ/Spanish

Odessa High School



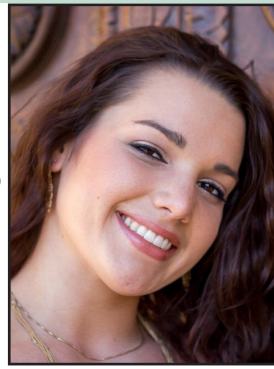
Hannah Scott
J.B. Scott and Gina Scott
History

Odessa High School



Jacob Moore
Brad and Jennifer Moore
Mathematics

Odessa High School



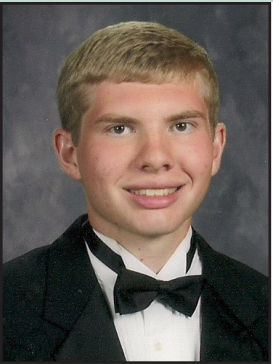
Megan Eagan
William and Amanda Eagan
Dietetics

Santa Fe High School



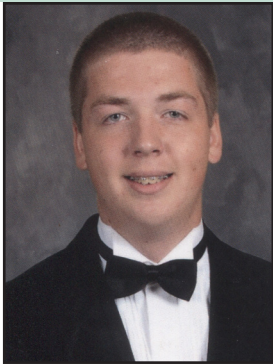
Izzy Drake
Gary and Cristi Drake
Chemistry

Oak Grove High School



Andrew Fallman
Gerald and Renee Fallman
English & East Asian Studies

Oak Grove High School



Jeremy Dunn
Doug & Brenda Drury,
Rodney Dunn (deceased)
Heavy Equip. Operation

Oak Grove High School



Katelyn Butler
Kerry and Tina Butler
Secondary English Ed.

Oak Grove High School



Garrison Willard
Gary Willard and Shelley Willard
Electrical & Computer Eng.

Lexington High School



Haylee Schreier
Kevin and Melanie Schreier
Agronomy

Lafayette Co. C-I High School



Katie Haston
James and Lucinda Haston
Nursing

Lafayette Co. C-I High School



Ross Simmons
Mark and Annette Simmons
Physics & Mathematics

Holden High School



Griffin Keller
Patrick and Cindy Keller
Exercise Science

Holden High School



Sydnee Yancey
Craig and Dee Yancey
PT and Athletic Training

Knob Noster High School



Derek Bivins
William and Tracy Bivins
Engineering

St. Paul Lutheran High School



Shannon Peters
Byron and Cheryl Peters
Nursing

St. Paul Lutheran High School



Emily Aversman
John and Denise Aversman
Nursing

Crest Ridge High School



Tiffany Pence Miller
Stew and Rhonda Miller
English Education

Crest Ridge High School



Austin Summitt
James and Marva Summitt
Business Management

Concordia High School



Laura Edwards
Janice Edwards
Biology/Pre-Chiropractic

Congratulations

to the winners
of the

2017 West Central Electric Cooperative Scholarship

Grain Valley High School



Kyla McBride
Steve and Teresa McBride
Pre-Optometry/Health Science

Holden High School

Photo not
provided

Kathryn Fitzgerald
Wally and Linda Fitzgerald
Business

Odessa High School

Photo not
provided

Morgan Kleoppel
Patrick and Rebecca Kleoppel
Nursing

From the Boardroom...

Regular meeting of the Board of Directors held March 23, 2017

The meeting was called to order by President Densil Allen, Jr. Robert Simmons, Secretary of the Cooperative, caused the minutes of the meeting to be kept. The following Directors were present: Max Swisegood, Clark Bredehoeft, Dale Jarman, Richard Strobel, Sandra Streit, Jeremy Ahmann and Stan Rhodes. Also present were General Manager Mike Gray, General Counsel Shawn Battagler and Administrative Assistant Kim Lewis.

APPROVAL OF AGENDA

After discussion, the agenda was approved.

APPROVAL OF CONSENT AGENDA

The board approved its consent agenda consisting of the minutes of the regular meeting of March 3, 2017, expenditures for the month of February 2017; new membership applications; membership terminations and the treasurer's report.

APPROVAL OF REPORTS

The following February 2017 reports were approved: Operating Report (RUS Form 7) and Comparative Operating Statement including the Financial Statistical Report with month and budget comparisons and statistical data pertaining to operating revenue, expenses, margins, assets, liabilities, cash-flow management and KWH sales and the written monthly Construction, Retirement, Maintenance and Operations Report.

SAFETY REPORT

Gray presented the monthly safety report.

AMEC REPORT

Bredehoeft reported on his attendance at the AMEC meeting. Highlights from the meeting included: legislative issues, legislative fish fry, Amendment 2 litigation, NRTC activities, introduction of Richard Moore, mutual aid and AMEC financials.

N.W. ELECTRIC POWER COOPERATIVE, INC. REPORT

Gray and Swisegood reported on their attendance at the N.W. meeting. Highlights included: AECL update, financials, outage report, safety, construction and operations, storm damage, retirement of patronage capital, annual meeting and salary survey.

NOMINATING COMMITTEE

The following cooperative members were appointed to the Nominating Committee: Tim Evert, Paul Nolte, Sarah Willard, Jerry Phoenix, Dennis Knipmeyer, Walter Hutcherson, Jeremy Sanders, Verna Jenkins and Adam Heater.

CAPITAL CREDITS

The board resolved to approve management's recommendation regarding retirement of capital credits.

MANAGER'S REPORT

Gray provided his Manager's Report for the month. Items of interest included: payment facilities in Warrensburg, update on headquarters improvements, mowing contracts, employee recognition and linemen appreciation breakfast, and recognition of Dale Jarman for 20 years of service on the board.

ANNUAL MEETING

The board discussed topics related to the annual meeting and potential bylaw proposals.

UNFINISHED BUSINESS

The board discussed follow-up on strategic planning.

NEW BUSINESS

Jarman and Simmons discussed their attendance at the director training in Jefferson City.

EXECUTIVE SESSION

The board entered into executive session.

MEETING ADJOURNED

Following executive session, the meeting was adjourned.

FINANCIAL REPORT • Statement of Operations • February 2017

	This month	YTD 2017	YTD 2016
Revenue	2,504,165	5,317,588	5,070,230
Power Bill Expense	1,317,252	2,919,510	3,089,921
Operation & Maint. Expense	262,136	482,505	383,324
Depreciation Expense	170,501	340,684	327,676
Interest Expense	95,634	201,506	177,559
Total cost of Srvcs. (Total Expense)	1,845,523	3,944,205	3,978,480
Operating Margins (Revenue less Expenses)	392,457	831,198	586,104
Other Margins	40,250	62,430	15,871
TOTAL MARGINS	432,707	893,628	601,975

Tips for summer-proofing your home

From page 1

- Crawl spaces
- All exterior walls, including basements
- Under floors and slabs
- Cathedral ceilings
- Dormers
- Around air conditioning ducts in unconditioned spaces

Have your A/C ready to go –

Change filters. Clean and shade your condensing unit, and remove dead leaves and grass that could block air flow. Ask your heating, ventilation and air conditioning contractor about installing dampers to restrict the flow of cooled air to rooms you rarely use and talk with the contractor about whether closing doors or registers in those rooms will affect your system's efficiency.

Reverse fan blades –

Reverse the blades on your ceiling fan so they turn counterclockwise and blow air downward.

Repaint your house a lighter color –

If your house has a dark-colored exterior, paint it lighter to reflect more of the sun's radiant energy. A dark color absorbs 70 to 80 percent of light rays.

Redo your roof –

If it's the year to re-shingle, go with light-colored ones which, like painting your house light, will reflect more solar heat. According to Bluejay, white shingles will save 10 to 20 percent in cooling costs. Even better, go with metal shingles or a metal roof. Metal will last longer than asphalt shingles and will reflect more than asphalt.

GFCI vs. AFCI

Do you know the difference?

The world of electricity is filled with acronyms and abbreviations – CFL (compact florescent light), kW (kilowatt), AC (alternating current), and gfci (peak operating voltage). GFCI (ground fault interrupters) and AFCI (arc fault circuit interrupters) are also common electrical abbreviations. They both help protect your outlets from electrical accidents.

GFCIs prevent shocks. AFCIs prevent fires.

Ground Fault Circuit Interrupters help prevent burns, electric shocks and electrocution. A GFCI has sensors that measure the current going in and out. Normally, the current is balanced. However, if the current is out of balance, something is wrong. The electric current has made contact with a human, or somewhere else it should not be. The GFCI senses this and instantly shuts down the circuit, stopping the flow of electricity. Since water is an electric conductor, GFCIs are important in areas where water and electricity could meet, such as bathrooms, kitchens, laundry rooms, and garages.

Arc Fault Circuit Interrupters help prevent electric fires. Electricity can leak out of damaged or decaying wires and start a fire. These fires spread quickly in the wiring behind walls. Electric fires cause more damage than other types of fire, and are twice as deadly. AFCIs sense that electricity is leaking from the electric system and shut electricity off before overheating happens.

GFCIs prevent shocks, and AFCIs prevent fires. Both should be installed by a qualified electrician to make your home safer.

Article courtesy of safeelectricity.org

