



West Central Electric Cooperative

June 2018

ElectricNews

A Touchstone Energy® Cooperative

West Central Electric Cooperative, Inc. ~ Serving our members' needs since 1939

Tree trimmers, sprayers start work on co-op right-of-ways

Contractors from Poor Boys Tree Service and Northeast Rural Utility Service are currently out on the system trimming trees and clearing right-of-ways, according to West Central Electric ROW Coordinator Dru Felkins.

Work began this spring in the areas of Higginsville and Lexington (around the Tabo area), Holden and Centerview. Spraying operations are also beginning this month with contractors Asplundh and Crop Production Services assisting WCE spraying crews.

"There will be lots of work going on

on the brush aide of things, so it will be a busy summer," Felkins said. "It will be good to get some of these things taken care of."

All contractors for WCE will have signs on their vehicles identifying them as a contractor working for WCE, and individuals will carry photo identification badges. Calls will be made to notify affected members on each circuit prior to the work beginning.

Questions regarding trimming and spraying may be directed to Felkins at 800-491-3803 or 816-565-4942.

June is recalculation month for level pay plan accounts

New amounts reflected on billing due in July

Members who are on the cooperative's Level Payment Plan will see their bills recalculated with the billing period ending in June, according to West Central Electric Office Manager Sandy Starke.

"Those new amounts will be reflected on the billing that is due in July," she said. "Those on Billing Cycle 2 will see their new amount in June."

Sign up for Budget Billing...

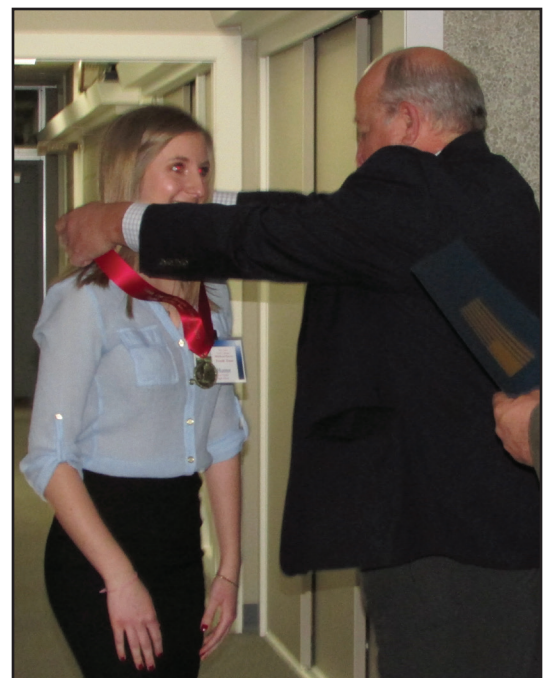
For West Central Electric Cooperative members who have service in their name and have lived there for one year or more, budget billing can help avoid the peak bills that come with winter heating or summer air conditioning. Here's how Budget Billing works:

- The total of electric usage over the last 12 months is calculated.
- That amount is divided by 12 months to find the average monthly bill with cushion for weather changes.
- The amount due for that amount of kilowatts is rounded, plus a daily service availability charge, and \$9.20 if a security light is at the location. This is the monthly budget amount to be billed.
- Each month a bill is mailed showing actual usage compared to the estimate you pay.
- Your account is reviewed each year and if the energy consumption appears to differ significantly from the budgeted amount, the billing department may contact you to see if you would like to make an adjustment to your account.
- In June of each year, we true up and compare your actual consumption with what was paid. Your new 12-month

Continued on page 6



YOUTH TOUR DELEGATE...
(Top photo) Hunter Todd of Odessa High School delivers his first-place speech in the Rural Electric Youth Tour and CYCLE finals April 5 in Higginsville. (Right photo) State Rep. Glen Kolkmeyer presents Haley Hunter of Chilhowee High School with her Youth Tour medal. Todd and Hunter will be joined by local students Kaylee Henry and Jaycee Mudd on the 2018 Rural Electric Youth Tour to Washington, D.C. in June. (Additional coverage on page 3.)



Attention WCE Members...

Your special Annual Meeting issue of *West Central Electric News* will be published in the July issue of *Rural Missouri*.

This publication is your official notice of the meeting. It will contain information on the annual meeting scheduled for **Friday, Aug. 3, 2018**, as well as board candidate profiles, bylaw changes and other pertinent meeting information.

Your official registration card will arrive along with the bill you receive at the end of June or the beginning of July (depending on your billing cycle).

This card must be brought to the annual meeting in order to register for prizes and vote in the board of directors election.

Headquarters:
7867 S. Highway 13, P.O. Box 452
Higginsville, MO 64037
816-565-4942 or 1-800-491-3803

District office:
506 N. Broadway
Oak Grove, MO 64075

PAY BY PHONE: 1-855-874-5349

Website:
www.westcentralelectric.coop

24-Hour Number:
1-800-491-3803

General Manager:
Mike Gray

*This institution is an equal
opportunity provider and employer.*

Board of Directors:
Densil Allen, Jr. President
Clark Bredehoeft, Vice-Pres.
Dale Jarman, Treasurer
Robert Simmons, Secretary
Stan Rhodes, Asst. Sect.
Max Swisegood, Director
Richard Strobel, Director
Sandra Streit, Director
Jeremy Ahmann, Director

Annual meeting mail-in voting information coming soon

Members wanting to participate in their cooperative's annual meeting but unable to attend may cast their vote for directors on the ballot by mail-in voting.

Beginning with the May 31 bill-

ing cycle, a notice will be included in members' bills explaining the vote-by-mail process. Members will be required to submit a request for a voting packet either by calling the office or mailing in the form with their bill. The notice

will have a perforated bottom that can be completed and either mailed to the cooperative or delivered in person.

Members who are able to attend the meeting may still vote in person at the meeting and do not have to submit a

mail-in ballot.

Questions on the mail-in voting procedures may be directed to Member Services Manager Brent Scholtzhauer at 800-491-3803 or 816-565-4942.

Shea Fitzgerald is named 2018 English Scholar

Committee awards \$7,500 in additional scholarship money

When the English family founded the John & Kathryn English Memorial Scholarship, they were looking for an active 4-Her who is not only a good student, but also "displays character, works diligently and faithfully, and is an active and good citizen and constructive member of society." The WCE Scholarship Committee is pleased to announce this year's winner is Shea Fitzgerald of Holden High School.

Following an application and interview process, Fitzgerald was named the 2018 John and Kathryn English Memorial Scholarship winner, and will receive a four-year, renewable scholarship worth a potential \$4,000.

Five other outstanding students were awarded a \$1,500 one-time scholarship, including Elizabeth Fahrmeier, Hannah Bargfrede, Olan Zeiler, Sadie Limback and Caitlin Niendick.

Shea Fitzgerald Holden High School

Throughout her 4-H career, Fitzgerald has been involved in every aspect of the organization from projects to trips to holding various offices. She is currently the president of both her club, the Union Chapel Lions, as well as the Johnson County 4-H Council.

Throughout her 4-H career, Fitzgerald has been chosen to attend both the National 4-H Congress in Atlanta, as well as the National 4-H Conference in Washington, D.C.

"On the first trip, 20 kids were selected from Missouri. We networked with kids from around the country, while discussing many social issues in our communities," she said. "We also performed hours of community service



Fitzgerald

while in Atlanta, and we saw poverty and hope first-hand."

Just a few months later, Fitzgerald was chosen as one of only three students out of thousands from the state of Missouri to attend the National 4-H Conference. She was the first delegate from Johnson County in more than 20 years.

"Once there, it got even better as I was selected to chair the agricultural committee, and chosen to be the presenter to the House of Representatives," she said. "It gave me so much insight into issues nationally and from a much broader spectrum.

"I gained a stronger sense of self-confidence because people who had never met me before put their confidence in my leadership," she said.

Fitzgerald was also chosen as a 4-H Youth Ambassador to Japan. While there, Fitzgerald said she was able to experience a whole new culture while sharing her love of 4-H with more than 200 kids who, "knew no English, yet we learned to understand each other

well," she said.

She learned not only about the culture, but the agriculture and spent time working on farms and in the rice fields.

"I can now say I completed the experience of the WHOLE 4-H Pledge," she said, "starting eight years ago in my club and my community, and this past year I took it to my country and my world."

Fitzgerald plans to attend Purdue University and study agribusiness and animal science. She is also interested in law and ag policy. She is the daughter of Arthur and Joye Fitzgerald.

Elizabeth Fahrmeier Wellington-Napoleon HS

Elizabeth Fahrmeier is the daughter of Lynn and Donna Fahrmeier of Wellington. She plans to attend the University of Missouri-Columbia and study agribusiness management. She is an 8-year member of the Napoleon Cloverleaf 4-H Club.



Fahrmeier

Hannah Bargfrede Santa Fe High School

Hannah Bargfrede is the daughter of Christopher and Mary Bargfrede of Alma. She plans to attend the University of Missouri-Columbia to study health science with an emphasis on rehabilitation. She is a 10-year member of Hitt 4-H Club.



Bargfrede

Olan Zeiler Wellington-Napoleon HS

Olan Zeiler is the son of Karl and Tonia Zeiler. He plans to attend Missouri State University. He has listed his major as undecided at this time.

Zeiler is an 11-year member of the Napoleon Cloverleaf 4-H Club.



Zeiler

Sadie Limback Santa Fe High School

Sadie Limback is the daughter of Kurt and Michelle Limback. She plans to attend the University of Nebraska-Omaha and study exercise science and pre-physical therapy. She is a 10-year member of Alma 4-H Club.



Limback

Caitlin Niendick Wellington-Napoleon HS

Caitlin Niendick is the daughter of Darwin and Cindy Niendick. She plans to attend the University of Missouri-Columbia and major in Agriculture. She is an 11-year member of Napoleon Cloverleaf 4-H Club.



Niendick

2018 RURAL ELECTRIC Youth Tour



YOUTH TOUR WINNER
Hunter Todd



YOUTH TOUR WINNER
Kaylee Henry



YOUTH TOUR WINNER
Jaycee Mudd



YOUTH TOUR WINNER
Haley Hunter

Area students prepare to take on Washington, D.C.

HIGGINSVILLE, Mo. – Four area high school students are preparing to pack their bags for a week in Washington, D.C. Hunter Todd of Odessa High School, Kaylee Henry of Warrensburg High School, Jaycee Mudd of Wellington-Napoleon High School and Haley Hunter of Chilhowee High School were named winners of the annual Rural Electric Youth Tour competition sponsored by West Central Electric Cooperative, Inc. They will receive an all-expense-paid trip to the nation's capital June 8-14 for the National Rural Electric Youth Tour.

Finalists in the 2018 competition delivered their essays during the oral competition at West Central Electric Cooperative's headquarters in Higginsville April 5. The four students with the highest combined written and oral presentation score were named winners.

West Central's delegates, their teachers and families will be invited to participate in Family Capital Day June 8 in Jefferson City where they will receive a private tour of the State Capitol Building, the Missouri State Archives, and the Supreme Court. Following a banquet and orientation in Jefferson City that evening, Missouri's 100-plus-member delegation will travel to Washington, D.C. on June 9. While there, delegates will visit, among other places, the Washington Monument, and the Jefferson, Lincoln, Roosevelt, Vietnam Wall and Korean War memorials. They will get the opportunity to witness the Changing of the Guard Ceremony at the Tomb of the Unknown Soldier in Arlington National Cemetery, take an evening dance cruise on the Potomac River with delegates from several other states, and tour the Smithsonian Museums.

Also on the agenda is Youth Day which is attended by more than 1,500 delegates from 44 states, and a day on Capitol Hill where students can meet with their senators and representatives.

A total of 89 entries were received from six different schools.

Students will represent WCE at CYCLE

Local students Sydney Mieser and Veronica Knox of Crest Ridge High School, Alexandra Osborn of Odessa High School and Jimmy Le of Warrensburg High School will represent WCE at the Cooperative Youth Conference and Leadership Experience (CYCLE) July 18-20 in Jefferson City.

CYCLE, which is coordinated by the Association of Missouri Electric Cooperatives, has been recognized as the top cooperative youth conference in the nation. During the conference, students will spend a day at the Missouri State Capitol Building, learn about cooperatives, participate in leadership and team-building activities, and hear top-notch speakers.

In addition to having the opportunity to network with student leaders from across the state, participants will also have the chance to write their own bill and debate that bill on the floor of the Missouri House of Representatives.

Past speakers at CYCLE have included Darrell Scott, whose daughter, Rachel, was killed in the shootings at Columbine High School in 1999, Grant Baldwin and wheelchair basketball world champion and paralympic medalist Mike Schlappi, whose message is "If you can't stand up -- stand out."



CYCLE WINNERS...These students will represent West Central Electric at the Cooperative Youth Conference and Leadership Experience in July. They are congratulated by WCE Board President Densil Allen, Jr. (far left) and WEC board member Jeremy Ahmann (far right). Winners are: (l-r) Sydney Mieser, Alexandra Osborn, Veronica Knox and Jimmy Le. (Not pictured: Nathan Piper.)

Cooperative will return \$1.4 million to members

West Central Electric Cooperative will return \$1.4 million to its members in capital credits refunds in July, according to WCE Office Manager Sandy Starke.

A credit will be issued on the billing due in August for all active members. A check will be mailed to non-members the first part of July.

If you purchased electricity from the cooperative during the years **listed in the box to the right**, you should receive a check or credit. Checks will not be issued for amounts under \$5.00.

"If a member is on our level payment program, the credit will not affect their monthly amount due," Starke said.

"The credit will be applied to the balance on the account.

"If a member has multiple accounts, the credits will be applied based on the previous month's bill; largest balance first, then the next until fully applied. If there are no current balances on the account, the credit will be applied to the primary account, the account that West Central has determined as holding the main membership," she said.

If a member has multiple accounts, and would like the credit applied to a different account than the one determined by the cooperative, members may call the office and request a transfer to the account of their choice.

If you do not see a credit on your account, and feel you should have, you may contact Sandy Starke at 1-800-491-3803.

\$1.4 million in Capital Credits will be refunded in 2018

This year, capital credits will appear as a credit to your electric account, and will be noted as such on your August billing.

Capital Credits being distributed this year include:

- ◆ 100% of all allocations for the year 1998

If you were were a member of the cooperative during this year, you should receive a refund.

Questions about this year's capital credits distribution should be directed to Sandy Starke in the Higginsville office: 800-491-3803 or 816-565-4942.

Maintain the safe zone around pad-mounted transformers

Co-op workers need at least 10 feet clearance at the opening side of a pad-mount transformer

Jordan Overbee was driving to work when he saw them. The elementary school-aged youngsters were just waiting for the school bus, but they were sitting on a big green metal box. Inside was vital electrical equipment, distributing electricity to several homes on the street.

"It was a bad place for a school bus stop," Overbee recalled. "There were five kids gathered there to wait for a bus, sitting, talking and playing for a few minutes because it was between driveways."

As manager of operations for Wake Electric Membership Corp., Overbee knows a lot about pad-mounted transformers. They make up about half of the transformers used across the Youngsville, North Carolina-based co-op's system.

"Transformers change voltage from higher levels to voltages people use in their homes for their electronics, appliances and lighting," said Overbee. "Each of our transformers can be vital to providing electricity to several homes."

After seeing the kids waiting at that same transformer several days in a row, Overbee pulled over and talked to some of the parents. He explained that high voltage electricity flowed through the transformer inside the casing, and encouraged them to move a safer distance away.

"The parents hadn't thought much about it, so once I explained the risks, they were happy to move to another driveway," Overbee said.

While overhead power lines are mounted on utility poles and substations

are protected by security fences, pad-mounted transformers, switch boxes and pedestals are at ground level.

"We have about 5,400 pad mounted transformers on our system," said Van Crawford, vice president of operations at Peace River Electric Cooperative, headquartered in Wauchula, Florida. "Of that number, 4,800 of them are located in the western district of our service territory."

In many newer subdivisions and residential developments, overhead lines are no longer an option. Burying power lines also reduces potential system damage from high winds and severe storms. While consumers seldom see technicians working on the transformers unless there are power outages, they are regularly inspected by co-op crews riding through neighborhoods.

"We can see fault indicators from the road," said Crawford, adding that one of the biggest concerns is safe access when repairs or component adjustments must be made. "That's why it's important that landscaping and other barriers be kept clear of co-op equipment."

Co-op technicians need at least 10-foot clearance at the opening side of a pad-mounted transformer. Approximately four feet of open space is preferable at the rear and on the sides of the metal housing.

That distance allows for tool use, including hot sticks—typically eight feet in length, used to work with energized equipment. It also ensures that one or two technicians working on a transformer have space to maneuver should they have to back away if problems occur.

"We once had a member use a transformer box as a work bench platform, and obviously we had to have him remove it," said Crawford. "We always try to explain the risks, and most members are more than willing to cooperative once they understand."

Pad-mounted transformers are con-

nected to primary high voltage lines, and secondary lines can extend in several directions to distribute power to homes and businesses. That's why it's important to check with your cooperative or call 811 before planting shrubs or trees, setting fence posts, installing sprinkler systems and digging where it might damage underground lines.

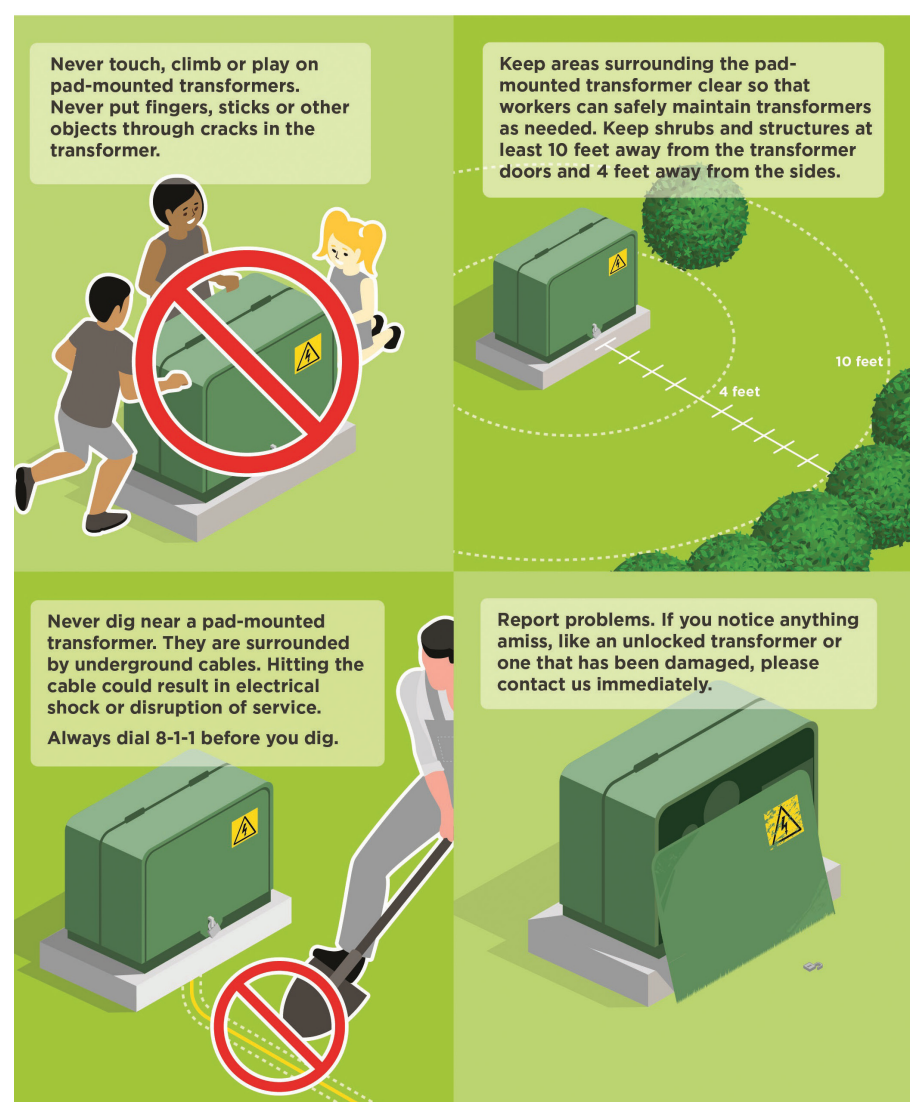
West Central Electric reminds you to contact 811 (Dig Rite) for a site assessment and marking before proceeding

with projects that might disrupt utility service, WCE also encourages public works and transportation departments to keep their equipment, supplies and road debris at least 15 feet away from pad-mounted transformers.

Derrill Holly writes on cooperative issues for the National Rural Electric Cooperative Association, the Arlington, Va.-based service arm of the nation's 900-plus consumer-owned, not-for-profit electric cooperatives.

Avoid the Big Green Box

Please stay away from pad-mounted transformers (the big green box). While safe, they are not meant for touching, climbing or playing. Pad-mounted transformers carry high voltages of electricity that serve many homes in our communities.



Odessa High School



Rebecca Engen
Paul & Tammy Engen
Biological Sciences

Odessa High School



Corryn Steinbeck
Mark & Cindy Steinbeck
Education

Odessa High School



Laura Empson
Scott & Tammy Empson
Health Sciences

Odessa High School



Sarah Pierce
Russell & Amy Pierce
Pharmacy

Odessa High School



Sydney Young
Brian & Stephanie Young
Radiology/Biology

Holden High School



Alice Evans
Andrea Evans
Nursing

Holden High School



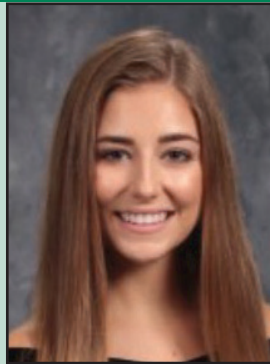
Brock Stanfield
Tye & Any Stanfield
Business or Safety Mgmt.

Holden High School



Bailey Lohe
Andy & Sara Lohe
Nursing

Holden High School



Kylene Crabtree
Dallas Crabtree
Business Management

Holden High School



Nicole Foley
Chad & Rhonda Foley
Nursing

Crest Ridge High School



Brenna Schmidli
Rick & Lisa Schmidli
Education

Crest Ridge High School



Alexandria Baker
Dana Baker & Steve Fischbach
Biology/Pre-Med

Crest Ridge High School



Tyler Livengood
Bryan & Melissa Livengood
Agriculture Business

Crest Ridge High School



Nathan English
Brandon English/Jennifer English
Mass Comm./Political Science

Wellington-Napoleon HS



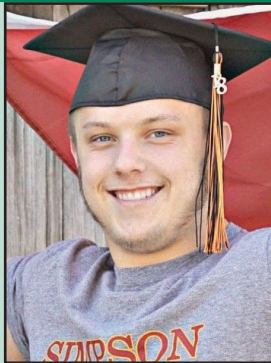
Valerie Barnett
James & Karla Barnett
Elementary Education

Oak Grove High School



Walter Hayes II
Ronald & Christine Hayes
Pre-Med Biology/Neurology

Oak Grove High School



Jacob Jackson
Keith & Kim Jackson
Exercise Sci./Athletic Training

Oak Grove High School



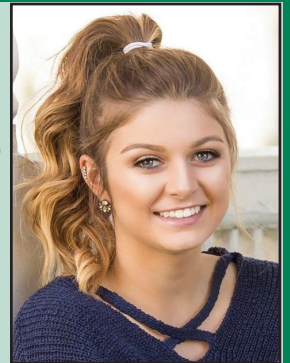
Jessica Kim
William & Jennifer Kim
Architecture

Knob Noster High School



Rylee Parrott
Samuel & Sarah Parrott
Public Relations/Marketing

Knob Noster High School



Taylor Kuhlman
Joshua Kuhlman & Amy Kuhlman
Dental Hygiene/Dental Med.

Congratulations

to the winners
of the

2018 West Central Electric Cooperative Scholarship

Pleasant Hill High School



Grace Keilholz
Michael & Nancy Keilholz
Nursing and Horticulture

Concordia High School



Samantha Brackman
Troy Brackman/Joel & Elisa Oetting
Nursing/Biology

Warrensburg High School



Ashley Horn
Adam Horn & Tricia Hansen-Horn
Business

From the Boardroom...

Regular meeting of the Board of Directors held March 22, 2018

The meeting, was called to order by President Densil Allen Jr. Robert Simmons, Secretary of the Cooperative, caused the minutes of the meeting to be kept. The following directors were present: Max Swisegood, Clark Bredehoeft, Dale Jarman, Richard Strobel, Stan Rhodes, Jeremy Ahmann and Sandra Streit. Also present were General Manager Mike Gray and general counsel Sheri Smiley.

APPROVAL OF AGENDA

After discussion, the agenda was approved.

APPROVAL OF CONSENT AGENDA

The board approved its consent agenda consisting of the minutes of the regular meeting of Feb. 22, 2018 expenditures for the month of February 2018; new membership applications; membership terminations and the treasurer's report.

APPROVAL OF REPORTS

The following February 2018 reports were approved: Operating Report (RUS Form 7) and Comparative Operating Statement including the Financial Statistical Report with month and budget comparisons and statistical data pertaining to operating revenue, expenses, margins, assets, liabilities, and KWH sales; Treasurer's Report and the written monthly Construction, Retirement, Maintenance and Operations Report.

SAFETY REPORT

Gray gave the safety report for the month of February.

NW REPORT

Swisegood presented the NW report for January. He discussed AEI updates, NW outages, financials to date, economic development and a wind farm update.

NRECA ANNUAL MEETING REPORT

Simmons, Ahmann and Gray discussed their attendance at the annual meeting including the Corporate Governance Report, the speakers who presented and resolutions that were made.

SCHOLARSHIP COMMITTEE REPORT

Allen reported on the John & Kathryn English Memorial Scholarship interviews held March 21. He reported there were great applicants, and the committee awarded one \$1,000 renewable scholarship and five one-time \$1,500 scholarships.

2018 NOMINATING COMMITTEE APPOINTED

The following names were provided by the Board and approved by the Board to be on the 2018 Nominating Committee:

District I: Walter Hutcherson, Kyle Grumke

District II: Dennis Knipmeyer, Paul Nolte

District III: Virginia Haller, CF Hackett

District IV: Verna Jenkins, Jerry Phoenix

District V: Tim Evert

APPROVAL OF 2018 CAPITAL CREDIT RETIREMENTS

Gray presented staff's recommendation to retire 100% of the Cooperative's 1998 capital credits for a total of \$1,413,348.66. The board voted to accept the recommendation to retire the 1998 capital credits.

ROUND-UP FOUNDATION BOARD REPORT

Streit reported on the March Round-up Foundation meeting. She reported that officers had been elected, the guidelines were accepted and voted on and application forms are being considered. The next meeting will take place in November. Gray discussed what insert will be in the May billing to inform members of the opt out option.

MANAGER'S REPORT

Gray presented his monthly Manager's Report. Items of interest included: the CFC annual visit and line of credit. He informed the Board that the current secured line of credit of \$1 million will change to a \$5 million unsecured line of credit and asked for board approval of the same. The board approved allowing the manager to execute any documents required to make the change to the \$5 million unsecured line of credit. He also discussed Facebook page updates, a LockBox proposal and the annual meeting. No changes will be put before the membership on Bylaws. He discussed some billing issues with meter changes and the new employee who has been hired.

UNFINISHED BUSINESS

None.

NEW BUSINESS

None.

MEETING ADJOURNED

Following the executive session, the meeting was adjourned.

FINANCIAL REPORT • Statement of Operations • February 2018

	This month	YTD 2018	YTD 2017
Revenue	3,064,182	6,373,331	5,346,524
Power Bill Expense	1,611,748	3,442,329	2,219,510
Operation & Maint. Expense	235,720	465,474	1,202,986
Depreciation Expense	176,016	352,985	340,684
Interest Expense	112,813	197,052	202,253
Total cost of Srvc. (Total Expense)	2,136,297	4,457,840	3,965,433
Operating Margins (Revenue less Expenses)	639,006	1,365,034	838,157
Other Margins	5,292	23,546	62,430
TOTAL MARGINS	644,298	1,388,580	900,587

Operation Round-Up program is getting set to launch this fall

The board is in place, guidelines have been voted upon and accepted, and application forms are being considered by the West Central Electric Cooperative Operation Round-up Foundation Board.

Operation Round-Up will be put into action later this year, and will benefit local and area organizations with financial assistance. The Operation Round-Up program will allow members' bills to be rounded up to the nearest dollar each month with proceeds being contributed to area organizations such as emergency departments, schools, community groups, etc. to assist with community projects and programs.

Members are reminded that everyone will be automatically enrolled in this program, however, you may contact WCE with your request to opt

out if you do not wish to participate.

The average member contribution will total around \$6 per year, with the maximum being just over \$11. Donations are also tax-deductible. Although \$6 to \$11 may not seem like much, when totaled together with other members' contributions, we can make good things happen. Some cooperatives have returned millions of dollars to their local communities.

Disbursement of funds will be determined by an Operation Round-Up board who will evaluate the requests and determine how funds are distributed. The next board meeting will take place in November.

Members who would like to opt-out of the Operation Round-Up program are asked to contact West Central Electric with your request.

June is recalculation month for level pay plan accounts

From page 1

average is determined and any credit or debit carryover is divided by 12 and added or subtracted for that 12-month average to determine your next year's monthly amount.

To receive full benefit of participation in the Level Payment program, you must make your monthly payment by the normal due date, maintain a good payment record with no returned checks on your account and no more than one trip for collection. Failure to do so may result in removal from the program and

could result in a requirement to pay any balance due in full with the next regular monthly billing. For those members who are already on the Level Payment Plan, your new amount will be recalculated with the billing period ending in June and be reflected on the billing that is due in July. Those members on billing Cycle 2 will see their new amount in June.

To sign up for the Level Payment Plan, or if you have any questions, please contact the billing department at 800-491-3803.

Eliminate the hassle of remembering to pay your bill each month.

Ask about our auto credit card and auto bankdraft payment plans. It's easy to sign up!

Just call 800-491-3803 or 816-565-4942.

Would you rather pay as you go?

We have pre-payment options too! Give us a call!

Energy Efficiency Tip of the Month

Laundry Tip: Use rubber or wool dryer balls, which help separate clothing in the cycle, providing better airflow and a shorter drying time. Wool dryer balls can help absorb moisture, which also reduces drying time.

Source: energy.gov

