



West Central Electric Cooperative

April 2019

ElectricNews

A Touchstone Energy Cooperative

West Central Electric Cooperative, Inc. ~ Serving our members' needs since 1939

Our members love our linemen...

And the feeling is mutual!

With each new season comes the welcome change in the weather, but that also brings the potential for storms. Winter produces snow and ice, and spring invites wind and rain. Through it all, however, there is one group who braves those elements day in and day out to keep your power on -- our linemen.

Ask any one of them what makes it worthwhile, and they will tell you being

ated," WCE Lineman Scott Gard said. "During the January snow storm, we had members coming out to check on us, offering to get us hot coffee and getting out their Rangers to help us get around. That made things go so much quicker. We really appreciated their help."

Line Superintendent Randy Burkeybile echoed those thoughts.

"During the big snowstorm in January, our Facebook page was filled with positive comments and encour-

Lineworker Appreciation Day

April 8, 2019

able to get a member's power back on in desperate times is one of the ultimate satisfactions of the job. Another is hearing the kind words from our members when the days are long and cold and the outages are coming faster than they can be repaired.

"It really makes you feel good to know what you are doing is appreci-

agement from our members to our linemen as well as the office personnel behind the scenes, and it was a great morale boost when things weren't going well," he said. "On this year's Lineworker Appreciation Day, we also want our members to know how much we appreciate them."



WCE Apprentice Lineman Nathan Johnson observes during a safety training exercise.

Take Control & Save changes will improve rebate program

Effective April 1, several new measures were added to the Take Control & Save energy efficiency program. Those changes include adding rebates for heat pump water heaters, Energy Star certified smart thermostats, Engine block heaters with timers, commercial and industrial high-efficiency motors and commercial and industrial variable frequency drives for HVAC.

Equipment previously on the rebate list will remain. Those include electric water heaters, room air conditioners, dual fuel and mini-split heat pumps and ground source heat pump systems. Rebates are limited to services using 6,000 kWh or more per year.

AVAILABLE REBATES

Heat Pump Water Heaters

The energy efficiency rating must meet DOE standards. This rebate includes new construction, the replacement of an existing electric water heater that is less than 0.90 efficiency with a unit that is greater than 0.90 efficient, or replacement of a gas water heater. The unit must be a 40 gallon or larger hp electric water heating unit. Limit two (2) per member address.

Rebate \$500.00

Energy Star Certified Smart Thermostat

Must be an Energy Star rated thermostat. Can be used with any type of heating and cooling system. Limit of up to two per member address. For new construction, or the replacement of an existing non-Energy Star Thermostat.

Rebate \$50.00

Programmable Timer-Engine Block Heater

Utilize a programmable timer with the use of an engine block heater.

Rebate \$15.00

Continued on page 2



MAKING PROGRESS...Renovations are moving right along at the Oak Grove facility. This view is from inside the front office looking at the front door.

Reminder: Oak Grove office is temporarily closed

Renovations at the Oak Grove location began in February and are expected to last until June 1.

Members have a variety of ways to conduct necessary business with the cooperative. Members needing to speak to West Central Electric employees

directly can still call 800-491-3803 or 816-565-4942 to reach a representative. Bills may be paid in person at the Higginsville office, by mail, online at www.westcentralelectric.coop or by phone at 1-855-874-5349. The drive-up

drop box will continue to be available at the Oak Grove location, and will be checked daily at 8 a.m. If your payment is past due, please DO NOT place it in the drop box. Contact the office first.

Headquarters:
7867 S. Highway 13, P.O. Box 452
Higginsville, MO 64037
816-565-4942 or 1-800-491-3803

District office:
506 N. Broadway
Oak Grove, MO 64075

PAY BY PHONE: 1-855-874-5349

Website:
www.westcentralelectric.coop

24-Hour Number:
1-800-491-3803

General Manager:
Mike Gray

*This institution is an equal
opportunity provider and employer.*

Board of Directors:
Densil Allen, Jr. President
Clark Bredehoeft, Vice-Pres.
Dale Jarman, Treasurer
Robert Simmons, Secretary
Stan Rhodes, Asst. Sect.
Max Swisegood, Director
Richard Strobel, Director
Sandra Streit, Director
Jeremy Ahmann, Director

Take Control & Save changes improve rebate program and incentives available to members

From page 1

Ground Source Heat Pump

Rebates for ground source heat pumps shall apply under the following terms and conditions:

1. The ground source heat pump shall be sized to a minimum Delta T of 70. (A Manual J calculation shall be submitted to support the Delta T.)
2. Installation must be for the replacement of electric resistance heat or a new home construction or a first-time installation of a GSHP system.
4. Replacement of an existing dual-fuel system.
5. Replacement of existing natural gas or propane heating system.
6. The heat pump must be qualified with an ENERGY STAR rating and meet the following efficiency standard for rebates: 2012 ENERGY STAR+2 rating: 19.1
7. Electric back up heat will be allowed only if the backup heat is separated from the heat pump by the installation of a separate breaker or switch.
8. The home must be insulated to a minimum of R-38 in the ceiling and R-13 in the walls.
9. Rebates are only available for up to 50 tons commercial and 10 tons residential.

DX (direct expansion) Ground Source Heat Pumps **DO NOT QUALIFY.**

Rebate \$750.00 per ton

Ground Source Heat Pump Replacement

Rebate is for the replacement of the indoor ground-source heat pump unit only and does not include loop system. If the heat pump (compressor) unit is replaced, it must be a gain of 3 EER ratings.

Rebate \$150.00 per ton

Dual Fuel and Mini-Split Heat Pump

Rebates for dual fuel heat pumps shall apply under the following terms and conditions:

1. New home and building construction
2. Replacement of electric resistance heat
3. Replacement of an existing dual-fuel heat pump
4. "Add-On" Air source heat pump to an existing fossil fuel heating system
5. The dual-fuel heat pump must have back-up automatic thermostat controlled natural gas, propane or fuel oil heating system for supplemental heat.
6. Wood burning systems **ARE NOT ELIGIBLE** as back-up for heating.
7. The heat pump must be qualified with an Energy Star rating and meet the following efficiency standards for rebates: 2015 Energy Star +2 rating 17.0 SEER.

Rebate \$150.00 per ton

Electric Water Heaters

For electric water heaters that meet DOE standards at time of manufacture

1. The efficiency rating of the new unit must be a minimum of .90 or greater
2. If the new unit replaces an old unit, the efficiency rating of the old unit must be electric with less than 0.90 efficiency.
3. Tankless water heaters **ARE NOT ELIGIBLE** for this program.
4. Rebates are available for existing and new homes.
5. Rebate applies only to electric water heating units.
6. Limit two (2) rebates per member address.

Rebate \$50.00

Energy Star Room Air Conditioners

Cooperative must verify an ENERGY STAR rated room air conditioning unit is purchased. The rebate will apply for the purchase of one new ENERGY STAR rated unit or the replacement of an existing unit. Rebates are available for existing and new homes. Limit 1 (one) per address. structure.

Rebate \$50.00

C&I High-Efficiency Motors

Replace less efficient motors with higher efficiency motors meeting current NEMA standards in an existing facility. Rebate per motor is based on Horsepower (HP) size See chart for Rebate.

Contact WCE for rebate chart

C&I VFDs for HVAC

Rebate when installing variable frequency drive motors for HVAC pumps and fans in an existing facility. VFD's are tied to an automated control system and have a True Power Factor of .90 or greater.

Rebate \$50.00 per brake HP

50/50 COST SHARE PROGRAMS

Basement/Crawl Space/Slab Insulation

This program is a 50/50 cost-shared incentive for cooperative members who are installing insulation in conjunction with the installation of a new ground source heat pump.

Incentive up to \$500

Home Energy Weatherization

This program is a 50/50 cost-shared incentive for cooperative members for weatherization improvements done in conjunction with an approved energy audit.

Incentive up to \$500 per home, \$25,000 for multi-unit complexes

Small Commercial & Industrial, School Energy Audits

This program is for commercial, school and industrial facilities that have basic energy usage and that use less than 500 kW per month. 50-50 cost share.

Incentive based on cost of the audit

Energy Audits--Industrial, Commercial & School

West Central Electric Cooperative personnel will work with industrial and commercial members in arranging energy audits for these facilities. This program is for commercial, school and industrial facilities that use greater than 50 kW per month and have more complex energy usage and needs. The cost of the audit shall be determined on a case-by-case basis. 50-50 cost share

Incentive based on annual peak demand consumption

Energy Audits--Residential

Energy audits shall be offered to members of the Cooperative who reside in a permanent residence on property owned by the member. Energy audits may be done at varying levels of intensity, depending on the member's needs and the cooperative's ability to perform the audit. The more intense audits will require a 50-50 cost share between the member and cooperative. This service will be provided to all members regardless of the type of heat found in the home

Incentive up to \$150

HIGH-EFFICIENCY LIGHTING REBATES

Business Lighting

This program is for C&I, schools and agricultural facilities that want to install high-efficiency lighting. West Central Electric Cooperative shall assist its members in applying for business lighting rebates in accordance and cooperation with Associated Electric Cooperative's "Take Control and Save Program."

Contact WCE for incentive information

2019 LEGISLATIVE CONFERENCE...

The Association of Missouri Electric Cooperatives held the 13th Annual State Legislative Conference in February with more than 250 co-op managers, directors and staff participating. The conference allows the state's grassroots team to meet with legislators on behalf of their members and discuss cooperative priorities for the year. Governor Mike Parson, a co-op member himself, attended the conference breakfast during the event. Visiting with Rep. Glen Kolkmeier (right) is (l-r) WCE Member Services Manager Brent Schlotzhauer, Rep. Dan Houx, Rep. Bill Kidd, WCE General Manager Mike Gray and Kolkmeier.



IT COULD HAVE BEEN WORSE...Everything from the trees to the grass was covered in ice more than once this winter. The February ice event could have been much worse on cooperative lines, however, WCE did not experience many outages because of the storm.

Neverending winter deposited record-breaking snowfalls, ice

Now it's time to prepare for winds and rain of spring

What a winter. If it wasn't snow, it was ice. If it wasn't ice, it was sleet. If it wasn't sleet, it was freezing rain. We've had it all. Sometimes it wrecked havoc and caused thousands of outages. Other times, it just made a sloppy mess and travel inconvenient. No one could be sure of the weather this winter, but one thing is for sure -- spring will be a welcome change among these parts!

However, we live in Missouri, and we know that spring brings its own issues, such as thunderstorms, tornadoes and flash-flooding. Here are some safety tips from the American Red Cross to help you make it through the next crazy Missouri season:

- Listen to local news or NOAA Weather Radio for emergency updates. Watch for signs of a storm, like darkening skies, lightning flashes or increasing wind.

- Postpone outdoor activities if thunderstorms are likely to occur. Many people struck by lightning are not in the area where rain is occurring.

- If a severe thunderstorm warning is issued, take shelter in a substantial building or in a vehicle with the windows closed. Get out of mobile homes that can blow over in high winds.

- If you can hear thunder, you are close enough to be in danger from lightning. If thunder roars, go indoors! The National Weather Service recommends staying inside for at least 30 minutes after the last thunder clap.

- Avoid electrical equipment and telephones. Use battery-powered TVs and radios instead.

- Shutter windows and close outside doors securely. Keep away from windows.

- Do not take a bath, shower or use plumbing.

- If you are driving, try to safely exit the roadway and park. Stay in the vehicle and turn on the emergency flashers until the heavy rain ends. Avoid touching metal or other surfaces that conduct electricity in and outside the vehicle.

- If you are outside and cannot reach a safe building, avoid high ground; water; tall, isolated trees; and metal objects such as fences or bleachers. Picnic shelters, dugouts and sheds are NOT safe.

Make it a safe spring by using caution when the season's storms show up to signal the end of winter.

Important notice to members regarding email contacts from West Central

Members who have an email address on file with the cooperative will, on occasion, receive notifications from WCE via that address.

Some of the notifications that may be received are listed as: "Bill Available," "Payment Declined," "Credit Card Expired" and "Payment Successful." The email notifications will be generated from the following address: "courier-no-reply@smarthub.com."

To receive these notifications, members will need to make sure they have allowed mail from this sender. The email WILL NOT have the name "West Central" in the address or the reference line.

Please contact WCE at 800-491-3803 or 816-565-4942 regarding questions about email contacts.

Plant the Right Tree in the Right Place

For more tips on smart tree planting in your community, contact your local electric cooperative or visit www.ArborDay.org.

Trees beautify our neighborhoods, and when planted in the right spot, can even help lower energy bills. But the wrong tree in the wrong place can be a hazard... especially to power lines.

LARGE TREES

Height/spread of more than 40 feet, such as:

- Maple
- Birch
- Oak
- Sweetgum
- Spruce
- Linden
- Pine

MEDIUM TREES

Height/spread of 25 to 40 feet, such as:

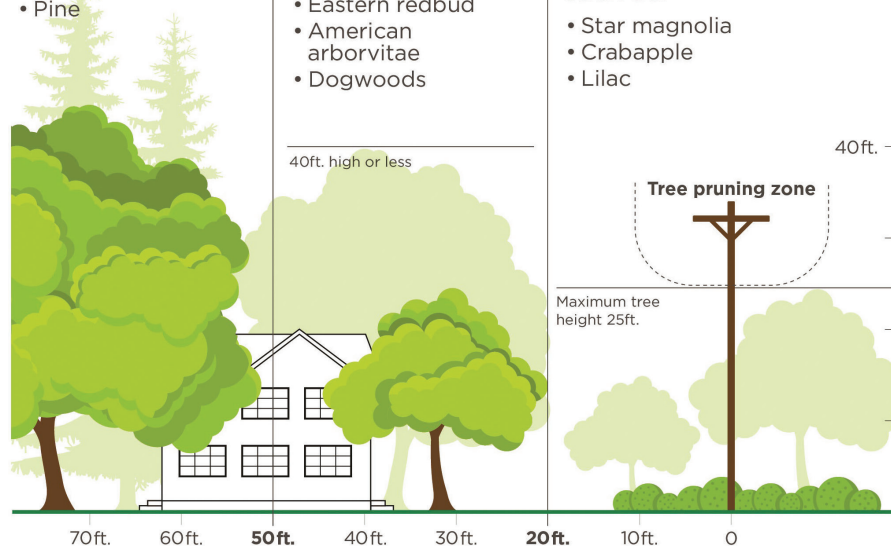
- Washington hawthorn
- Goldenrain tree
- Eastern redbud
- American arborvitae
- Dogwoods

SMALL TREES

Avoid planting within 20 feet of power lines. When planting within 20 feet is unavoidable, use only shrubs and small trees.

Height/spread of no more than 25 feet such as:

- Star magnolia
- Crabapple
- Lilac



Be safe! Always call 811 before you dig to locate any buried utility lines.

Source: The Arbor Day Foundation and the National Rural Electric Cooperative Association

From the Boardroom...

Regular meeting of the Board of Directors held January 23, 2019

The meeting, was called to order by President Densil Allen Jr. Robert Simmons, Secretary of the Cooperative, caused the minutes of the meeting to be kept. The following directors were present: Max Swisegood, Clark Bredehoeft, Dale Jarman, Richard Strobel, Sandra Streit and Jeremy Ahmann. Stan Rhodes was absent. Also present were General Manager Mike Gray, general counsel Sheri Smiley and Rod Widger and WCE office staff.

APPROVAL OF AGENDA

After discussion, the agenda was approved.

APPROVAL OF CONSENT AGENDA

The board approved its consent agenda consisting of the minutes of the regular meeting of Dec. 20, 2018, expenditures for the month of December 2018; new membership applications and membership terminations.

APPROVAL OF REPORTS

The following November 2018 reports were approved:

Financing and Treasurer's Report: Michael Newland presented the December 2018 Operating Report and Comparative Operating Statement and reviewed the Financial Statistical Report with monthly and annual budget comparisons, reviewed the Financial Statistical Report with monthly and annual budget comparisons. He also gave the investment report. He presented and reviewed statistical data pertaining to operating revenue, expenses, margins, assets, liabilities, cash flow management, and KWH sales. He discussed line loss calculations and sales comparisons year-to-date. He discussed equity level, long range planning, and peak and demand charges. He also gave the Treasurer's report.

Revenue Deferral Plan: Newland also presented the Revenue Deferral Plan. The board passed a resolution authorizing the adoption of the Deferred Revenue Plan for Future Power Cost for WCEC, Inc.

EXECUTIVE SESSION

The board entered into executive session at 10:35 a.m. and adjourned at 11:20 a.m. to continue the regular meeting.

APPROVAL OF 20-19 BUDGET

Newland and Gray presented the 2019 budget which was then approved.

Engineering and Operations Report: Gray presented the Engineering Report which included information on construction, retirement, maintenance and operations for 2018 and 2019. He reported on new services, outages, pole change outs and maintenance. He reported on brush crews and spraying crews and gave a member services report. He also reported on the January snow storm and the outside crews that were brought in to assist with outages.

Safety Report: Gray gave the Safety Report for the month of December.

NW Report: Swisegood presented the NW report for January. He discussed AECI updates, outages, the solar and wind report and margins and expenses, as well as changes to NW Policies.

Manager's Report: Gray presented his monthly Manager's Report. Items of interest included member comments. He also discussed waiving late fees on furloughed government employees, gave an update on the Oak Grove building, the employee banquet in March and also discussed the policy on information available to members.

Round Up Foundation: Streit reported that \$2,500 had been given to Odessa Park and \$4,520 to the Concordia Senior Center. The next meeting is scheduled for April.

UNFINISHED BUSINESS

None.

NEW BUSINESS

None.

MEETING ADJOURNED

FINANCIAL REPORT • Statement of Operations • December 2018

	This month	YTD 2018	YTD 2017
Revenue	\$1,988,905	\$29,037,976	\$25,963,152
Power Bill Expense	1,390,063	17,721,935	16,237,184
Operation & Maint. Expense	789,935	6,665,150	6,195,725
Depreciation Expense	180,386	2,135,565	2,082,301
Interest Expense	124,879	1,650,097	1,237,780
Total cost of Srvcs. (Total Expense)	2,485,263	28,172,747	25,752,990
Operating Margins (Revenue less Expenses)	(496,358)	865,229	210,162
Other Margins	887,259	1,234,016	1,101,118
TOTAL MARGINS	\$390,901	\$2,099,245	\$1,311,280

Truax joins lineman ranks

West Central Electric General Manager Mike Gray has announced the addition of Matt Truax as a journeyman lineman at the cooperative.

Truax, who will work out of the Oak Grove location, is originally from Shawnee, Kan., and began working at the cooperative in October 2018. He completed his preliminary period and became official in February.

Truax said he is pleased to be a part of WCE and looks forward to a successful career.

"I am looking forward to learning the area and establishing a good relationship with members and co-workers," he said.



Truax



TRAINING COMPLETE...WCE Operations Manager Randy Burkeybile (right) presents Lineman Adam Beck with his certificate denoting completion of apprenticeship training from Northwest Lineman College. The program includes many hours of testing. Beck's final requirements for gaining journeyman status will be on-the-job hours.

Patrick retires after 38 years

Anne Patrick joined West Central Electric Cooperative on Sept 21, 1981 when she began her career as a meter reader. At that time, WCE had 36 meter routes that were read at the end of each month, so by part-time meter readers. In 1989, Anne became a full-time meter reader.

Anne moved inside in 2001 and became the area office associate at the Warrensburg location following the death of Flossie Hough, who passed away after a short battle with cancer.

After eight years manning the Warrensburg office and taking care of members in the southern part of the service area, Anne found herself moving again. The decision was made to close the Warrensburg location, and Anne began working in the main office in Higgins-



West Central Electric General Manager Mike Gray recognizes Member Services Advisor Anne Patrick for 38 years of service to the cooperative.