



West Central Electric Cooperative

June 2021

A Touchstone Energy® Cooperative 

# ElectricNews

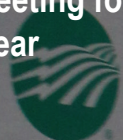
## Youth Tour & CYCLE

Delegates will attend modified  
conferences in lieu of traditional trips  
Page 3


**PAGE 2**  
Gathering restrictions on  
UCM campus forces the  
cancelling of in-person  
annual meeting for the  
second year

**PAGE 6**  
WCE allocates capital  
credits for 2020. Find out  
how to figure what goes  
into your capital credits  
allocation account

**PAGE 6**  
June is recalculation month  
for co-op members on the  
Level Payment Plan. Find out  
how payments are figured and  
how you can sign up



West Central  
Electric  
Cooperative

A Touchstone Energy® Cooperative 



## Reminder to members that rate increase takes effect this month

Members are reminded that the 2021 rate increase -- postponed from taking effect in 2020 because of the pandemic -- will be reflected with June usage.

The change amounts to a total overall revenue increase for the cooperative of 6.5 percent. The new **residential rate** will see charges for the first 800 kWh set at \$0.096 and over 800 kWh at a reduced rate of \$0.0795. The service availability charge will increase \$0.10 to \$1.32 per day.

The **commercial three-phase monthly rate** will now be charged as one flat rate for all kWh. The previous rate was \$0.0951 for the first 800 kWh and \$0.0712 for anything over 800 kWh. The new rate will be \$0.0798 for all kWh. The service availability charge will increase from \$2.13 per day to \$2.24 per day.

"When the pandemic hit in March 2020, we did not want to put an additional burden on our members," Gray said. "Then in February of this year, the Polar Vortex set a record-high peak demand which will cause our wholesale power costs for 2022 to rise significantly (therefore making the increase necessary)."

### West Central Electric Cooperative, Inc.

#### Headquarters:

7867 S. Highway 13, P.O. Box 452, Higginsville, MO 64037  
816-565-4942 or 1-800-491-3803 • PAY BY PHONE: 1-855-874-5349

#### To report outages 24/7:

Call 816-565-4942 or 1-800-491-3803 • or report outages at [www.westcentralelectric.coop](http://www.westcentralelectric.coop) under "View & Report Outages"

#### District office:

506 N. Broadway, Oak Grove, MO 64075

#### Website:

[www.westcentralelectric.coop](http://www.westcentralelectric.coop)

#### General Manager:

Mike Gray

#### Board of Directors:

Densil Allen, Jr. *President*; Clark Bredehoeft, *Vice-Pres.*; Dale Jarman, *Treasurer*; Robert Simmons, *Secretary*; Stan Rhodes, *Asst. Sect.*; Max Swisegood, *Director*; Richard Strobel, *Director*; Sandra Streit, *Director*; Jeremy Ahmann, *Director*

*This institution is an equal opportunity provider and employer.*

**ON THE COVER:** Youth Tour and CYCLE finalist Wesley Marten delivers his speech before a panel of judges during the 2021 finals April 7. Students participated in a modified live event consisting only of finalists and judges. Marten was named a delegate to the Cooperative Youth Conference and Leadership Experience to be held in July.

## In-person annual meeting is cancelled for second year due to Covid concerns

### *University has limits on large gatherings*

West Central Electric Cooperative's board of directors has opted for the second year to cancel the in-person annual meeting normally held in August because of restrictions by the University of Central Missouri concerning large gatherings.

"Because of the uncertainty of when those restrictions may change, and the need to make firm decisions now because of legal timelines, the board has decided to hold the annual meeting the same way it was last year," General Manager Mike Gray said. "The whole process worked very smoothly with mail-in voting and using the member newsletter to provide information on candidates, finances and the state of the cooperative," he said.

Members will receive information on the annual meeting voting process in the July issue of *Electric News*, including details on how to request a ballot.

"We were hopeful that the pandemic would be behind us by this time and we could hold the annual meeting as normal, but we have to adhere to the university's guidelines, and also consider the safest process for our members," Gray said.

*As the weather warms, you will be outside more.  
Take precautions when storms approach!*

Lighting  
can strike  
**10 miles**  
from where  
it is raining

Safe  
Electricity.org



research collected from the National Oceanic and Atmospheric Administration



# 2021 RURAL ELECTRIC Youth Tour & CYCLE

## Missouri opts for in-state conferences as D.C. trip is again cancelled due to Covid

With continued uncertainty because of Covid and the need to make a decision before too many costs were incurred, NRECA opted in January to cancel the 2021 Youth Tour to Washington, D.C. Following suit, the Association of Missouri Electric Cooperatives cancelled the traditional Cooperative Youth Conference and Leadership Experience (CYCLE) to Jefferson City.

Not wanting to leave students completely without the opportunity to meet and make connections, however, AMEC opted to hold both Youth Tour and CYCLE as a mini-conference where students get the chance to meet with fellow delegates in person, but in smaller groups, and virtually with the entire state.

Both conferences will be a three-day (partial day) event with Youth Tour scheduled for June 16-18 and CYCLE scheduled for July 21-23. Students will spend two mornings at the WCE office in Higginsville participating in activities, learning to make a difference and touring the local cooperative. They will also spend one day at the NW Electric district office in Cameron with delegates from other cooperatives in the NW district.

"We have chosen this format so students can still gather with fellow delegates, but in smaller groups for social distancing," WCE Youth Tour Coordinator Heather Hoflander said. "In addition to meeting virtually with the entire state, there will also be optional virtual meetings before and after the conferences to keep delegates involved. Rather than cancel both trips again this year, we wanted to be able to give our winners something even if it is on a smaller scale."

The 2021 Youth Tour winners will also receive a \$2,000 scholarship.

"We were pleased that so many students (43 entries) took the time to participate in this year's Youth Tour even though they knew going in there would be no trips," Hoflander said. "I think that shows how well-received cooperative youth programs are, especially by our area teachers, and that students realize they can gain a lot from participating in their local cooperatives."



YOUTH TOUR WINNER  
*Cooper Hamlin*



YOUTH TOUR WINNER  
*Jessica Snare*



YOUTH TOUR WINNER  
*Suzy Cooper*



2021 CYCLE delegates are (l-r) Lane Rogge, Leslie Martens, Landry Key, Graycee Brown and Wesley Marten. Winners were chosen following a modified live finals April 7 where finalists presented their essays to a panel of three judges.



# 2021 John & Kathryn English Scholars



**Michael Dieckmann**  
4-year, \$1,000 Renewable Winner  
(potential \$4,000 award)



**Audrey Phillips**  
One-year Winner  
\$2,000



**Caedon Bergman**  
One-year Winner  
\$2,000

\*The **John & Kathryn English Memorial Scholarship Trust** was created under the terms of the Last Will & Testament of Kathryn English. The purpose of this trust is to provide scholarship grants for high school graduates who are active 4-H members at the time of their high school graduation and who desire to attend college to pursue a degree. John English, a former director of West Central Electric Cooperative, Inc., designated West Central's Board of Directors as Trustees of the Memorial Scholarship Trust.

Want to save money on products and services you use every day just for being a co-op member?

Want to support your local, hometown businesses as well as receive discounts across the country?

Are you a local business owner wanting to promote your business FREE to co-op members and get FREE advertising?

Well, you CAN!

The Co-op Connections Card is coming soon for WCE members. Continue to watch this newsletter and our Facebook page for dates and details!





## 2021 West Central Electric Cooperative Scholars

### \$900 scholarship winners



Jacelynn Laws



Kendra Siefker



Faith Drennon



Nicholas Gillespie



Konnar Lundquist



Reagan Shippy



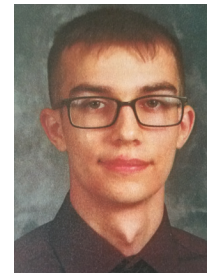
Abigail Blansit



Paige Hobbs



Jonna Burrow



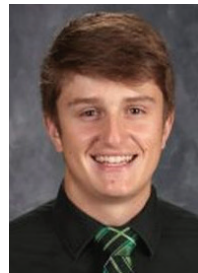
Dalton Mayhew



Sydney Ritter



Jake Hipsher



Will Taylor



Joni Roberts



Lauren Fiene



Breanna Elling



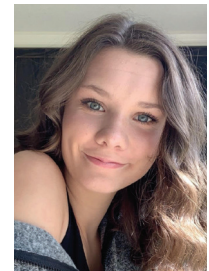
Cortez Jarman



Logan Empson



Nathaniel Freund



Natalia Phillips



Trent Begemann



Raegan Horn

\*The **West Central Electric Cooperative Scholarship** is available to students whose parents or legal guardians are current members of the cooperative. The funds are awarded to students graduating high school and planning to attend a college, university or trade or technical school the fall following their graduation.



# June is recalculation month for co-op level pay plan accounts

Members who are on the cooperative's Level Payment Plan will see their bills recalculated with the billing period ending in June, according to West Central Electric CFO Michael Newland.

"Those new amounts will be reflected on the billing that is due in July," he said. "Those on Billing Cycle 2 (with due dates on the 22nd of the month) will see their new amount in June."

## **Sign up for Budget Billing...**

For West Central Electric Cooperative members who have service in their name and have lived there for one year or more, budget billing can help avoid the peak bills that come with winter heating or summer air conditioning. Here's how Budget Billing works:

- The total of electric usage over the last 12 months is calculated.
- That amount is divided by 12 months to find the average monthly bill with cushion for weather changes.
- The amount due for that amount of kilowatts is rounded, plus a daily service availability charge, and \$9.20 if a security light is at the location. This is the monthly budget amount to be billed.
- Each month a bill is mailed showing actual usage compared to the estimate you pay.
- Your account is reviewed each year and if the energy consumption appears to differ significantly from the budgeted amount, the billing department may contact you to see if you would like to make an adjustment to your account.
- In June of each year, we true up and compare your actual consumption with what was paid. Your new 12-month average is determined and any credit or debit carryover is divided by 12 and added or subtracted for that 12-month average to determine your next year's monthly amount.

To receive full benefit of participation in the Level Payment program, you must make your monthly payment by the normal due date, maintain a good payment record with no returned checks on your account and no more than one trip for collection. Failure to do so may result in removal from the program and could result in a requirement to pay any balance due in full with the next regular monthly billing. For those members who are already on the Level Payment Plan, your new amount will be re-calculated with the billing period ending in June and be reflected on the billing that is due in July. Those members on billing Cycle 2 will see their new amount in June.

To sign up for the Level Payment Plan, or if you have any questions, please contact the billing department at 800-491-3803.

# West Central allocates capital credits for 2020

West Central Electric Cooperative's margins have been allocated to each member/owner who purchased electric energy in 2020, according to General Manager Mike Gray.

Because rural electric cooperatives' business structure differs from investor-owned utility companies, the money WCE makes as margins (profits) is returned to the member/owners who use the service, rather than to unknown investors. The money is used as equity in the cooperative, and is returned to the members over time as determined by your board of directors.

West Central Electric tries to balance the system by staying financially strong while also returning the profits to its members over time. Each year, the board of directors decides how this will be accomplished.

You can calculate your own allocation for the year by using the formula in the box below.

The percentage used in the formula was determined by the total margins (profits) of the cooperative, and the total cost paid for our wholesale power in 2020. This year, your allocated amount for 2020 will appear on the bill you received in May.

If you have a non-rural/residential account, any questions regarding how to calculate your allocation, or if you do not know your year-to-date patronage, contact Michael Newland at the Higginsville office at 816-565-4942 or 1-800-491-3803.

## **Total paid for electricity in 2020**

(Beginning with the bill reflecting usage for January 2020 and ending with the bill reflecting usage for December 2020.)

**0.10173338590**

## **2020 allocation**

(Applies to rural/residential rate only.)

## **Example:**

**\$1,000 total billing for 2020**

**\$1,000**

**X**

**0.10173338590**

**\$101.73**

**2020 allocation**





Round Up Foundation President Dennis Knipmeyer, board member LuAnn Stillwell, Lafayette County Fair Board President Alex Siefker and Vice-president Jo Farmer.



## Lafayette County 4-H & FFA Fairboard \$5,250

Funds will be used to build 35 pens sized 5' x 6' to house sheep, goats, swine and other small livestock at the fairgrounds.

## Health Care Coalition of Lafayette County \$10,000

Funds will be used for adult public health events for uninsured or under-served residents including dental extractions, haircuts, enrollment for Medicaid, food stamps, disability, unemployment, Medicare and more. HCC also partners with Diagnostic Imaging to offer no-cost mammograms. Guests are also able to take home laundry detergent, shampoo, body wash, sheets, blankets, coats and other items.



(L-r) Shelly Harden, community health worker; Round Up Foundation board member Devin Graf; Suzanne Smith, chief network development officer; Round Up board member Sally Davidson and Kayla Schmidt risk and clinical services coordinator.



Round Up Foundation President Dennis Knipmeyer, Lafayette County C-I High School P.E. instructor Kaissee Lovercamp, C-I High School Principal Todd Whitney and Round Up board member Sally Davidson.

## Lafayette County C-I HS Phys. Ed. Dpt. \$5,000

Funds will be used used to purchase HeartZones Heart Rate Monitors 30-blink 3.0, similar to a smart watch. Monitors are worn by students and connected through WiFi to an iPad which stores and shares the data. Data will be used to ensure the physical education department is doing what is safe and best for the students.

## Knob Noster Jubilation Center Footsteps Camps \$1,200

Funds will be used for the membership fees for Footsteps Camps. Footsteps Camps is a group of 501C3 organizations that join to receive overstock and return items from Amazon, CVS Pharmacy stores, Walmart and other companies which are then made available free of charge to anyone needing assistance. Items available include clothing, toys, tools, household items, electronics, small kitchen appliances, personal hygiene items, etc.



Round Up Foundation board member Sally Davidson, Footsteps Camps Coordinator Carolyn Akins, Chairman Jerry Akins, Round Up board member Donna Matthews



# FROM THE WCE BOARDROOM...

Regular meeting of the Board of Directors held March 25, 2021

The meeting, was called to order by Vice President Clark Bredehoeft. Robert Simmons, secretary of the cooperative, caused the minutes of the meeting to be kept. The following directors were present: Bredehoeft, Simmons, Max Swisegood, Dale Jarman, Richard Strobel, Stan Rhodes and Jeremy Ahmann. Densil Allen Jr. and Sandra Streit appeared by phone. Also present were General Manager Mike Gray, CFO Michael Newland and general counsel Sheri Smiley.

## APPROVAL OF AGENDA

After discussion, the agenda was approved.

## APPROVAL OF CONSENT AGENDA

The board approved its consent agenda consisting of the minutes of the regular meeting of February 2021; expenditures for the month of February 2021; new membership applications and membership terminations.

## APPROVAL OF REPORTS

The following february reports were approved:

**Financing and Treasurer's Report:** Newland presented the February 2021 Operating Report (RUS Form 7) and Comparative Operating Statement. He reviewed the Financial and Statistical Report and Treasurer's Report with monthly and annual budget comparisons. He also gave the investment report. He presented and reviewed statistical data pertaining to operating revenue, expenses, margins, assets, liabilities, cash flow management, and KWH sales and ratios. He discussed the top loads for the co-op for the past year and reported on February 2021 financials from West Central Services.

## RATE INCREASE DISCUSSION

Gray and Newland had provided the board with rate proposal discussion material prior to the meeting that was based on the updated cost-of-service study done by Toth and Associates. It included comparisons of the current rate and proposed rate increases in all rate classes. The service availability charge was also considered as well as the impacts on revenue depending on when the rate increase would go into effect. The winter demands were considered for 2020 and the demand discounts that will go away from AECL due to the polar vortex. A motion was made and passed following discussion to use Option 3 for the Farm and Home Rate 101 for the first year only, and to amend the rate classes for 501 and 503 rates as suggested by Toth and Associates with an effective date of June 1.

## DISCUSS CAPITAL CREDIT REPORT

Newland provided the past year's general retirement and the 2021 management recommendations of retiring 100% of 1999, 100% of 2000 and 80% of 2001 of the West Central, NW, and CFC Capital Credits for a total of \$1,753,836.08. The motion passed.

**Operations and Safety Report:** Randy Burkeybile provided a written Operations Report. His report included the following: a crew update, outages for the month from the high winds, brush crews will begin work at the Centerview Substation, and right-of-way reports. Gray reported on a retirement of a mechanic and how that position will be filled.

**Safety and Engineering Report:** Pete Nelson provided a written Safety and Engineering Report. He reported on the following: safety meetings and crew visits; staking projects, pole inspections, new services and change services. He reported that Federated had completed their audit.



**Member Services Report:** Brent Schlotzhauer presented a written Member Services Report. He reported on Operation Round Up, gave an update on Youth Tour and that the live finals will be held on April 7, winners of the English scholarships will be announced March 31. An update on the Co-op Connections card was given. Following the polar vortex there have been many requests for in-home energy audits to be performed. He also reported on net metering. Gray reported on a dust to dawn light issue that a member had.

## NW REPORT

Swisegood and Gray reported on the March board meeting. They provided the mid-month AECL report, and reported on outages, wind, and solar. No lost-time accidents were reported. An update on the Kearney interchange was given. They reported on the cost of service study and on how AECL's systems reacted during the February storm. The power bill from AECL and NW was discussed.

## APPOINT NOMINATING COMMITTEE

The following people were appointed to the 2021 Nominating Committee: District 1 -- Donald Fore, Adam Heater; District 2 -- Lance Tieman, Paul Nolte; District 3 -- Virginia Haller, Jeremy Sanders; District 4 -- Verna Jenkins, William Grauberger and District 5 -- Stephanie Othic.

## POLICY 23.1

Gray presented the policy regarding changes on EV charger rebates. Staff-recommended changes were approved.

## LEGAL REPORT

Attorney Sheri Smiley presented a report on legal matters.

## MANAGER'S REPORT

Gray presented his monthly Manager's Report. He gave a COVID update for the office. An all-employee meeting will be held April 23. AMEC is having their first live meeting in April. The CFC meeting for June was discussed. Each cooperative can have one person attend. Gray will be the representative for WCE.

## UNFINISHED BUSINESS

None

## NEW BUSINESS

None

## ADJOURNMENT

Meeting adjourned.

## FINANCIAL REPORT • Statement of Operations • February 2021

	This month	YTD 2021	YTD 2020
<b>Revenue</b>	<b>\$3,357,702</b>	<b>\$6,294,142</b>	<b>\$6,527,306</b>
Power Bill Expense	1,825,604	3,486,923	3,247,785
Operation & Maint. Expense	525,575	1,081,773	1,110,759
Depreciation Expense	198,928	397,160	382,151
Interest Expense	104,877	220,252	226,489
<b>Total cost of Srvc. (Total Expense)</b>	<b>2,654,984</b>	<b>5,186,108</b>	<b>4,967,184</b>
Operating Margins (Revenue less Expenses)	702,718	1,108,034	1,560,122
Other Margins	5,379	12,345	18,688
<b>TOTAL MARGINS</b>	<b>\$708,097</b>	<b>\$1,120,379</b>	<b>\$1,578,810</b>

